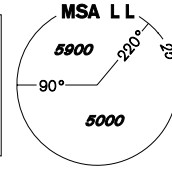


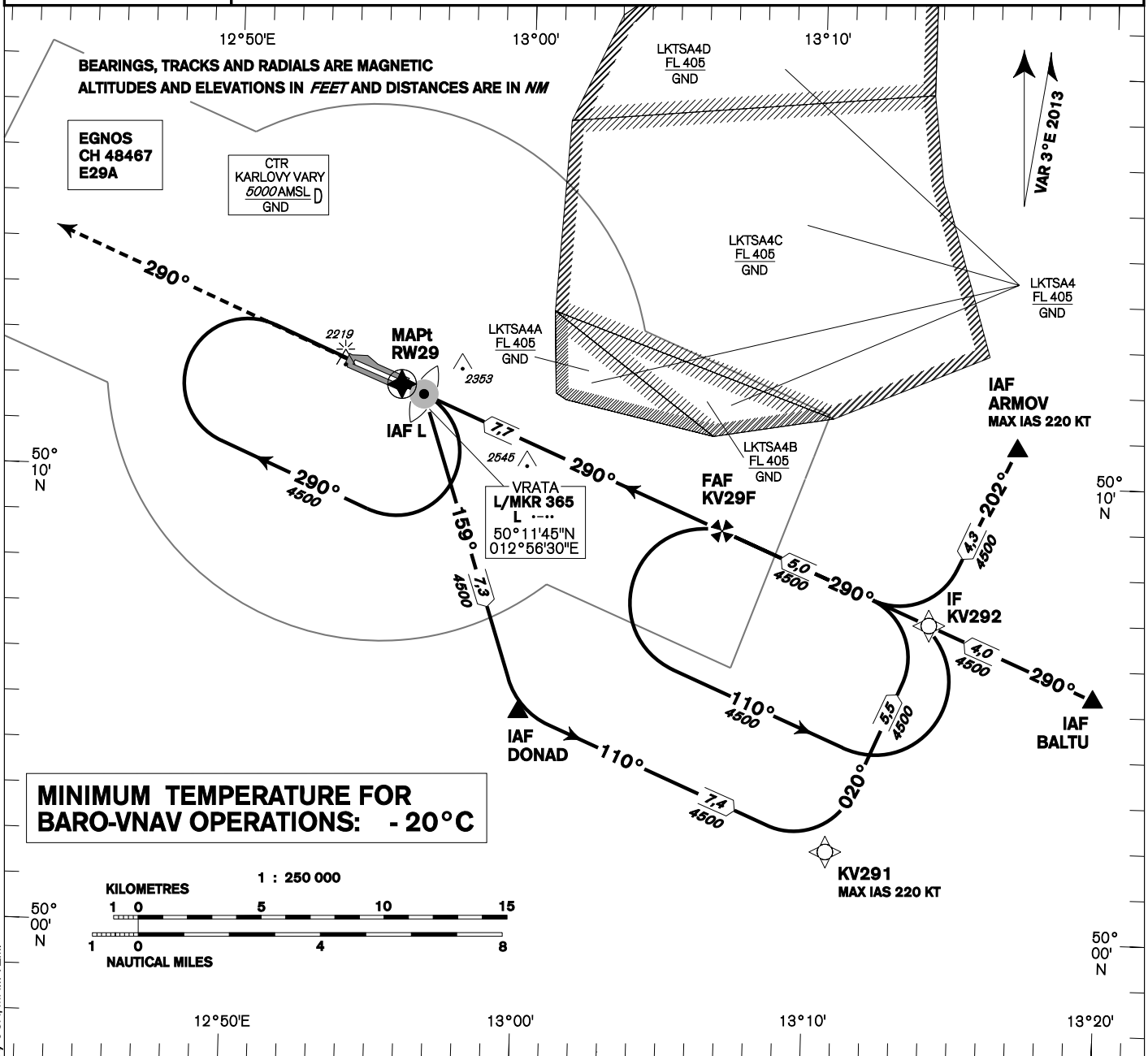
INSTRUMENT APPROACH CHART - ICAO

AERODROME ELEV 1989
THR RWY 29 ELEV 1985
OCH RELATED TO THR RWY 29

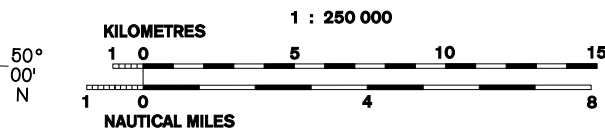
KARLOVY VARY
APPROACH/RADAR 118,650
119,955
KARLOVY VARY TOWER 121,230
SUPPLEMENTARY FREQ. 122,905
121,500



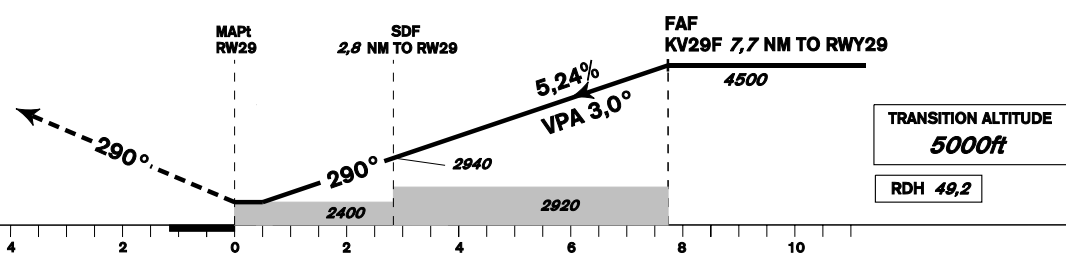
KARLOVY VARY RNAV (GNSS) RWY 29



**MINIMUM TEMPERATURE FOR
BARO-VNAV OPERATIONS: - 20 °C**



MISSED APPROACH:
Climb on track 290° to 4500 ft AMSL and expect vectoring.
In case of RCF climb on track 290°, at 4500 ft AMSL turn left to L L.



OCA/OCH		A	B	C	D
RNAV	ft	2400 / 420			
RNAV / VNAV	ft	2383 / 398			
LPV	ft	2235 / 250	2243 / 258	2251 / 266	2261 / 276
Circling (south of AD only)	ft	2520 / 540	2800 / 820	3350 / 1370	3570 / 1590

DIST THR (MAPt)	7	6	5	4	3	2	1
ALTITUDES ft	4280	3940	3630	3310	2990	2670	2350
FAF - MAPt 7,7 NM	kt	80	100	120	140	160	180
Rate of descent (5,24%)	min:sec	5:48	4:39	3:52	3:19	2:54	2:35
	ft/min	420	530	640	740	850	960

Timing is not authorised for determining the MAPt

change: speed limit of IAF ARMOV and KV291, OCA/OCH, MNM TEMP

Posloupnost traťových bodů / Way point sequence

Od / From IAF ARMOV		
ARMOV	IAF	fly-by
KV292	IF	fly-by
KV29F	FAF	fly-by
RW29	MAPt	fly-over

Od / From IAF DONAD		
DONAD	IAF	fly-by
KV291		fly-by
KV292	IF	fly-by
KV29F	FAF	fly-by
RW29	MAPt	fly-over

Seznam traťových bodů / Way point list	
ARMOV	50 10 50,76 N 013 16 50,52 E
BALTU	50 05 22,06 N 013 19 35,48 E
DONAD	50 04 50,93 N 013 00 00,00 E
KV291	50 01 55,29 N 013 10 35,25 E
KV292	50 06 56,23 N 013 13 56,91 E
KV29F	50 08 54,77 N 013 06 48,58 E
L L	50 11 44,84 N 012 56 30,07 E

Od / From IAF BALTU		
BALTU	IAF	fly-by
KV292	IF	fly-by
KV29F	FAF	fly-by
RW29	MAPt	fly-over

Od / From IAF L L		
L L	IAF	fly-by
DONAD		fly-by
KV291		fly-by
KV292	IF	fly-by
KV29F	FAF	fly-by
RW29	MAPt	fly-over

SBAS FAS Data Block

Vstupní data / Input Data

Parametry / Parameters	Hodnoty / Values
Operation Type	0
SBAS Provider	1
Airport Identifier	LKKV
Runway	29
Runway Direction	0
Approach Performance Designator	0
Route Indicator	
Reference Path Data Selector	0
Reference Path Identifier	E29A
LTP/FTP Latitude	501157.3150N
LTP/FTP Longitude	0125544.2950E
LTP/FTP Ellipsoidal Height (metres)	651.4
FPAP Latitude	501222.7190N
Delta FPAP Latitude (seconds)	25.4040
FPAP Longitude	0125411.4990E
Delta FPAP Longitude (seconds)	-92.7960
Threshold Crossing Height	15.00
TCH Units Selector	1
Glidepath Angle (degrees)	3.00
Course Width (metres)	105.00
Length Offset (metres)	0
HAL (metres)	40.0
VAL (metres)	50.0

Výstupní data / Output Data

Parametry / Parameters	Hodnoty / Values
Data Block	10 16 0B 0B 0C 1D 00 00 01 39 32 05 06 0E 8B 15 4E 6B 8C 05 72 2D 78 C6 00 08 2B FD 2C 81 2C 01 64 00 C8 FA A4 71 90 3F
Calculated CRC Value	A471903F

Required Additional Data (not CRC wrapped)

Parametry / Parameters	Hodnoty / Values
ICAO Code	LK
LTP/FTP Orthometric Height (metres)	605.0
FPAP Orthometric Height (metres)	605.8