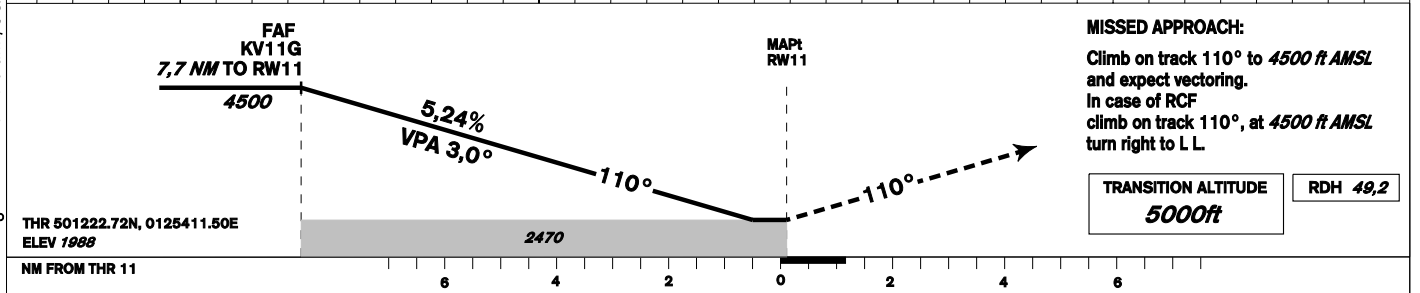
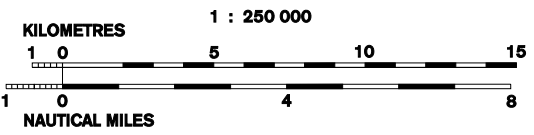
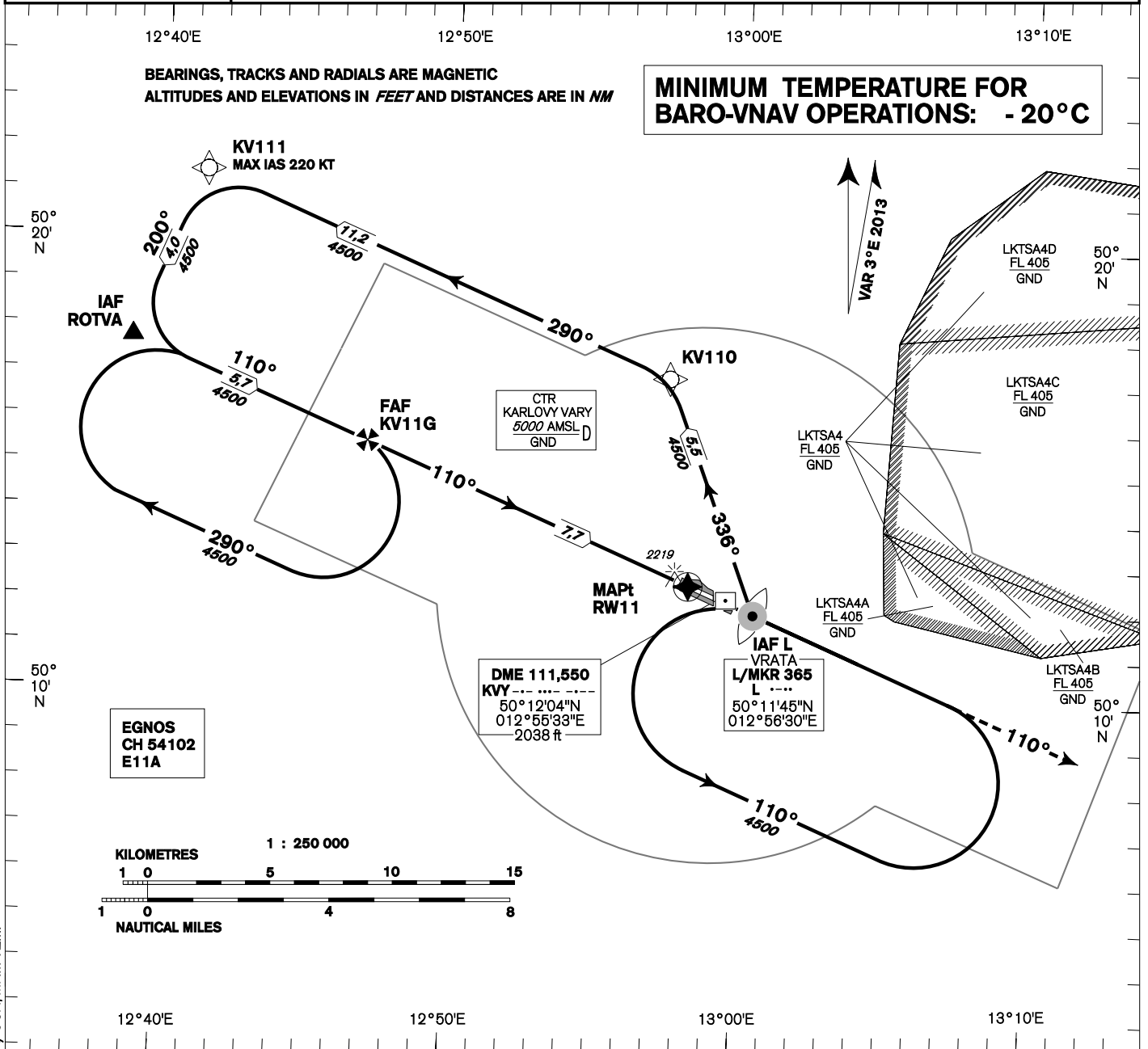
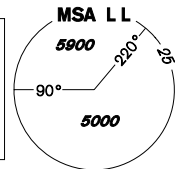


INSTRUMENT APPROACH CHART - ICAO	AERODROME ELEV 1989 THR RWY 11 ELEV 1988 OCH RELATED TO THR RWY 11	KARLOVY VARY APPROACH/RADAR 118,650 119,955 KARLOVY VARY TOWER 121,230 SUPPLEMENTARY FREQ 122,905 121,500	KARLOVY VARY RNAV (GNSS) RWY 11
---	--	---	--



OCA/OCH	A	B	C	D	DIST THR (MAPt)	7	6	5	4	3	2
LNAV	2470/490				ALTITUDES ft	4260	3940	3630	3310	2990	2670
LNAV / VNAV	2430/450										
LPV	2349/360	2361/372	2369/380	2380/391	kt	80	100	120	140	160	180
Circling (south of AD only)	2520/540	2800/820	3350/1370	3570/1590	min:sec	5:48	4:39	3:52	3:19	2:54	2:35
					Rate of descent (5,24%)	ft/min	420	530	640	740	850

Timing is not authorised for determining the MAPt

change: IF KV120 withdrawn, OCA/OCH, MINM TEMP

Posloupnost traťových bodů / Way point sequence

Od / From IAF ROTVA		
ROTVA	IAF	fly-by
KV11G	FAF	fly-by
RW11	MAPt	fly-over

Od / From IAF L L		
L L	IAF	fly-by
KV110		fly-by
KV111		fly-by
ROTVA		fly-by
KV11G	FAF	fly-by
RW11	MAPt	fly-over

Seznam traťových bodů / Way point list	
ROTVA	50 17 36,71 N 012 34 55,67 E
KV110	50 16 55,30 N 012 53 27,59 E
KV111	50 21 17,57 N 012 37 21,03 E
KV11G	50 15 23,91 N 012 43 05,90 E
L L	50 11 44,84 N 012 56 30,07 E

SBAS FAS Data Block

Vstupní data / Input Data

Parametry / Parameters	Hodnoty / Values
Operation Type	0
SBAS Provider	1
Airport Identifier	LKKV
Runway	11
Runway Direction	0
Approach Performance Designator	0
Route Indicator	
Reference Path Data Selector	0
Reference Path Identifier	E11A
LTP/FTP Latitude	501222.7190N
LTP/FTP Longitude	0125411.4990E
LTP/FTP Ellipsoidal Height (metres)	652.2
FPAP Latitude	501157.3150N
Delta FPAP Latitude (seconds)	-25.4040
FPAP Longitude	0125544.2950E
Delta FPAP Longitude (seconds)	92.7960
Threshold Crossing Height	15.00
TCH Units Selector	1
Glidepath Angle (degrees)	3.00
Course Width (metres)	105.00
Length Offset (metres)	0
HAL (metres)	40.0
VAL (metres)	50.0

Výstupní data / Output Data

Parametry / Parameters	Hodnoty / Values
Data Block	10 16 0B 0B 0C 0B 00 00 01 31 31 05 7E D4 8B 15 56 96 89 05 7A 2D 88 39 FF F8 D4 02 2C 81 2C 01 64 00 C8 FA 5A BF 7D 15
Calculated CRC Value	5ABF7D15

Required Additional Data (not CRC wrapped)

Parametry / Parameters	Hodnoty / Values
ICAO Code	LK
LTP/FTP Orthometric Height (metres)	605.8
FPAP Orthometric Height (metres)	605.0