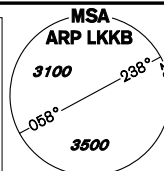


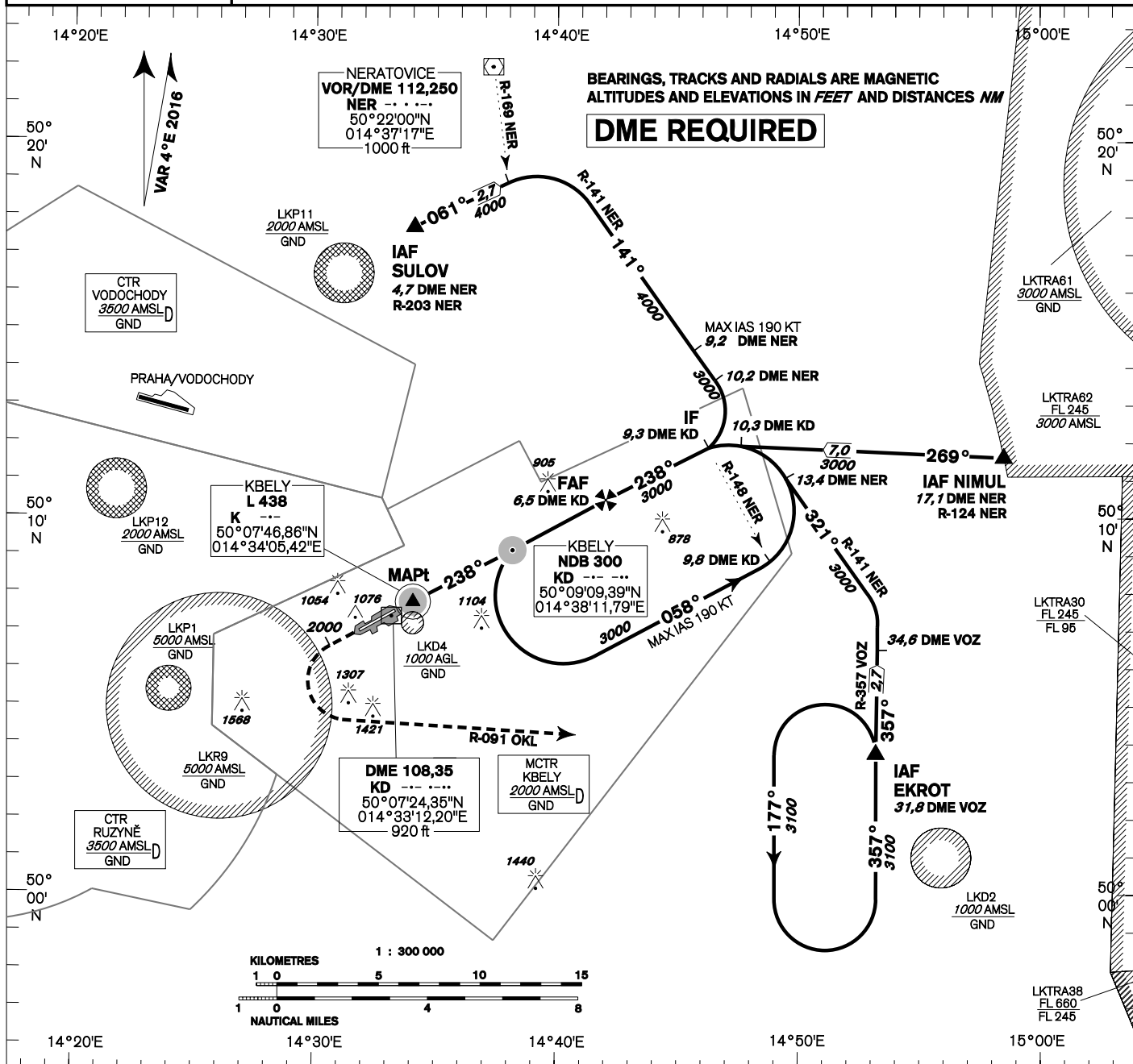
# INSTRUMENT APPROACH CHART - ICAO

AERODROME ELEV **939**  
 THR RWY 06 ELEV **939**  
 THR RWY 24 ELEV **916**  
 ARP **919**  
 OCH RELATED TO THR RWY 24

KBELY APPROACH/ RADAR 124,680 279,000 reserve  
 KBELY PRECISION 126,760 123,300 reserve 315,000 reserve  
 KBELY TOWER 120,880 134,730 reserve



**KBELY  
NDB  
RWY 24**

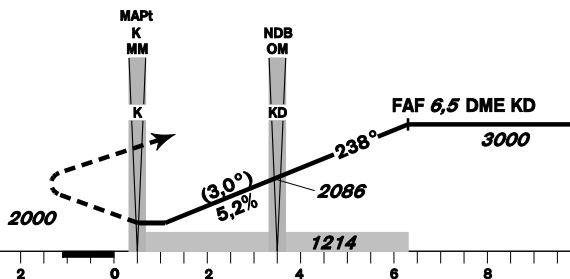


**MISSED APPROACH:**  
 Climb to 2000ft max 2,7NM  
 KD DME turn left intercept radial R 091  
 OKL then climb 3100ft  
 continue to EKROT

TRANSITION ALTITUDE  
**5000ft**

**MISSED APPROACH:**  
 to IAS ≤ 190 kt min. bank angle 15°  
 to IAS ≤ 235 kt min. bank angle 20°  
 IAS MAX = 235 KT

THR 500731.93N, 0143321.70E  
 ELEV 916 -33 hPa



OCA/OCH		A	B	C	D
Straight-in Approach	NDB ft		1214/296		
Straight-in Approach	PAR ft		1155/239		
Circling (South only)	ft	1345	1656	1971	-

DME KD	NM	6,5	5,0	4,0	3,0	2,0	1,0	0,5
ALTITUDES ft		3000	2500	2241	1912	1607	1286	1115

	Kt	60	90	120	150	180
FAF - MAPt 5,8 NM	min:sec	5:49	3:53	2:55	2:20	1:57
Rate of descent	ft/min	315	470	640	790	960

Timing is not authorized for defining the MAPt.