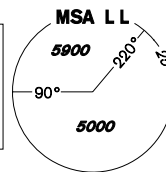


INSTRUMENT APPROACH CHART - ICAO

AERODROME ELEV **1989**
THR RWY 11 ELEV **1988**
OCH RELATED TO ARP

KARLOVY VARY
APPROACH/RADAR **118,650**
119,955
KARLOVY VARY TOWER **121,230**
121,500

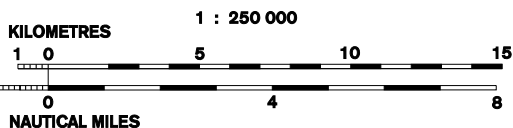
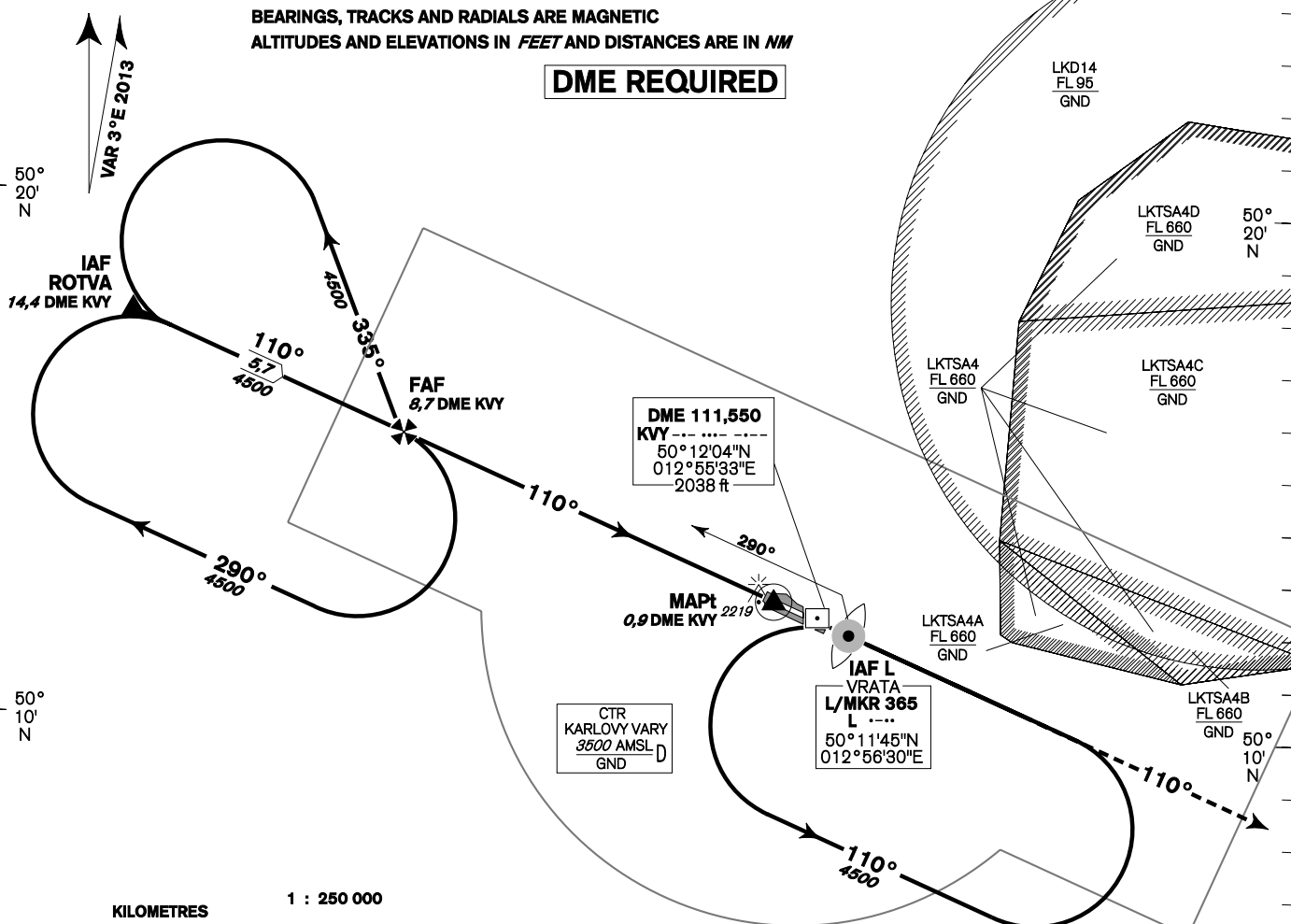


KARLOVY VARY NDB RWY 11

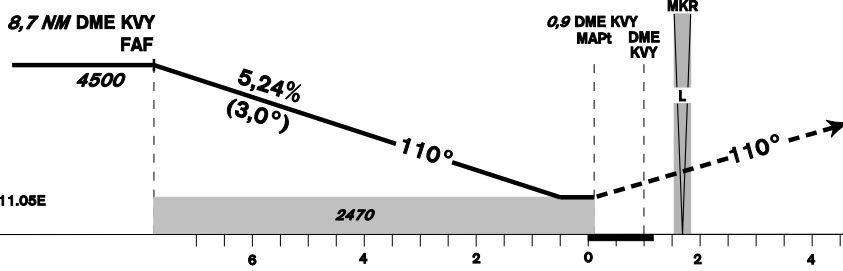
12°40'E 12°50'E 13°00'E 13°10'E

BEARINGS, TRACKS AND RADIALS ARE MAGNETIC
ALTITUDES AND ELEVATIONS IN FEET AND DISTANCES ARE IN NM

DME REQUIRED



12°40'E 12°50'E 13°00'E 13°10'E



MISSED APPROACH:
Climb on track 110° to 4500 ft AMSL and expect vectoring.
In case of RCF climb on track 110°, at 4500 ft AMSL turn right to L L.

TRANSITION ALTITUDE
5000ft

THR 501222.84N, 012541.105E
ELEV 1988

NM FROM THR 11

OCA/OCH	A	B	C	D
Straight-in Approach	ft 2470/490			
Circling (south of AD only)	ft 2520/540	2800/820	3350/1370	3570/1590

DME Kvy / NM	7	6	5	4	3	2
DIST THR (MAPt)	6,1	5,1	4,1	3,1	2,1	1,1
ALTITUDES ft	3970	3650	3330	3010	2700	2380

	kt	80	100	120	140	160	180
FAF - MAPt 7,7 NM	min:sec	5:48	4:38	3:52	3:19	2:54	2:35
Rate of descent (5,24%)	ft/min	420	530	640	740	850	960

Timing is not authorised for determining the MAPt

change: vertical and horizontal limits of CTR KARLOVY VARY, new LKD14