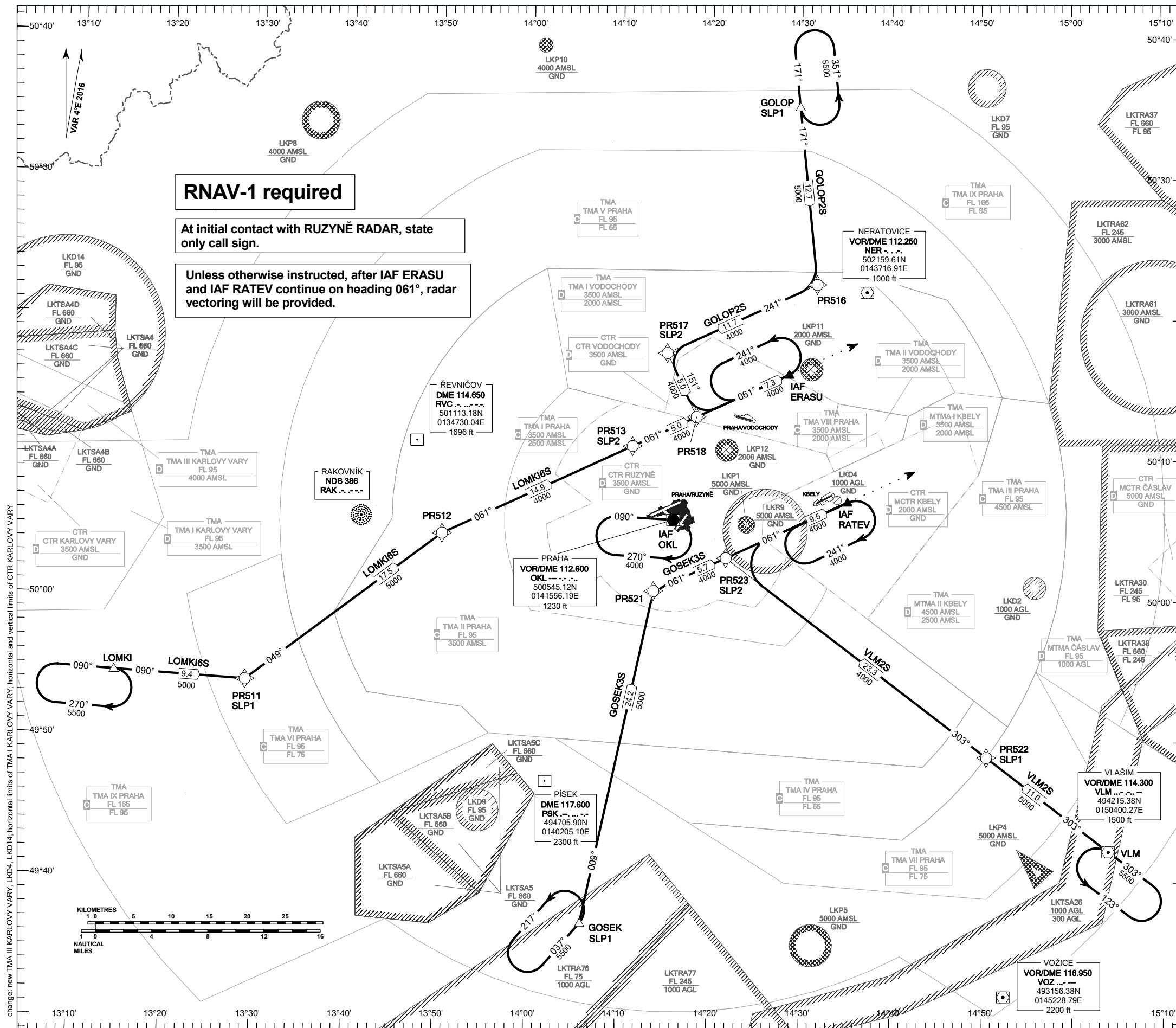


**RNAV STANDARD ARRIVAL CHART - INSTRUMENT  
(STAR) - ICAO**

**PRAHA/RUZYŇĚ  
RNAV STAR RWY 24**

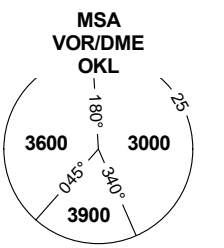


**RNAV-1 required**

At initial contact with RUZYŇĚ RADAR, state only call sign.

Unless otherwise instructed, after IAF ERASU and IAF RATEV continue on heading 061°, radar vectoring will be provided.

PRAHA APPROACH / RADAR	120.530
RUZYŇĚ APPROACH / RADAR	127.580
RUZYŇĚ RADAR / INFORMATION	118.310
SUPPLEMENTARY FREQ APP	136.080
RUZYŇĚ DELIVERY	120.060
RUZYŇĚ TOWER	134.560
SUPPLEMENTARY FREQ TWR	118.110
RUZYŇĚ GROUND	121.910
RUZYŇĚ ATIS	122.160
EMERGENCY FREQ	121.500



TRANSITION ALTITUDE  
5000

SPEED LIMITING POINT	
SLP1	MAX IAS 250 KT
SLP2	MAX IAS 220 KT

BEARINGS, TRACKS AND RADIALS ARE MAGNETIC  
ALTITUDES AND ELEVATIONS ARE IN FEET  
DISTANCES ARE IN NM

see AIP AD 2-LKPR-30, 2.22.4.2.1.