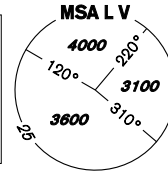


INSTRUMENT APPROACH CHART - ICAO

AERODROME ELEV 919
THR RWY 10 ELEV 880
OCH RELATED TO THR RWY 10

VODOCHODY RADAR 127,480
TOWER 133,080
121,500

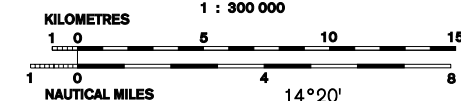
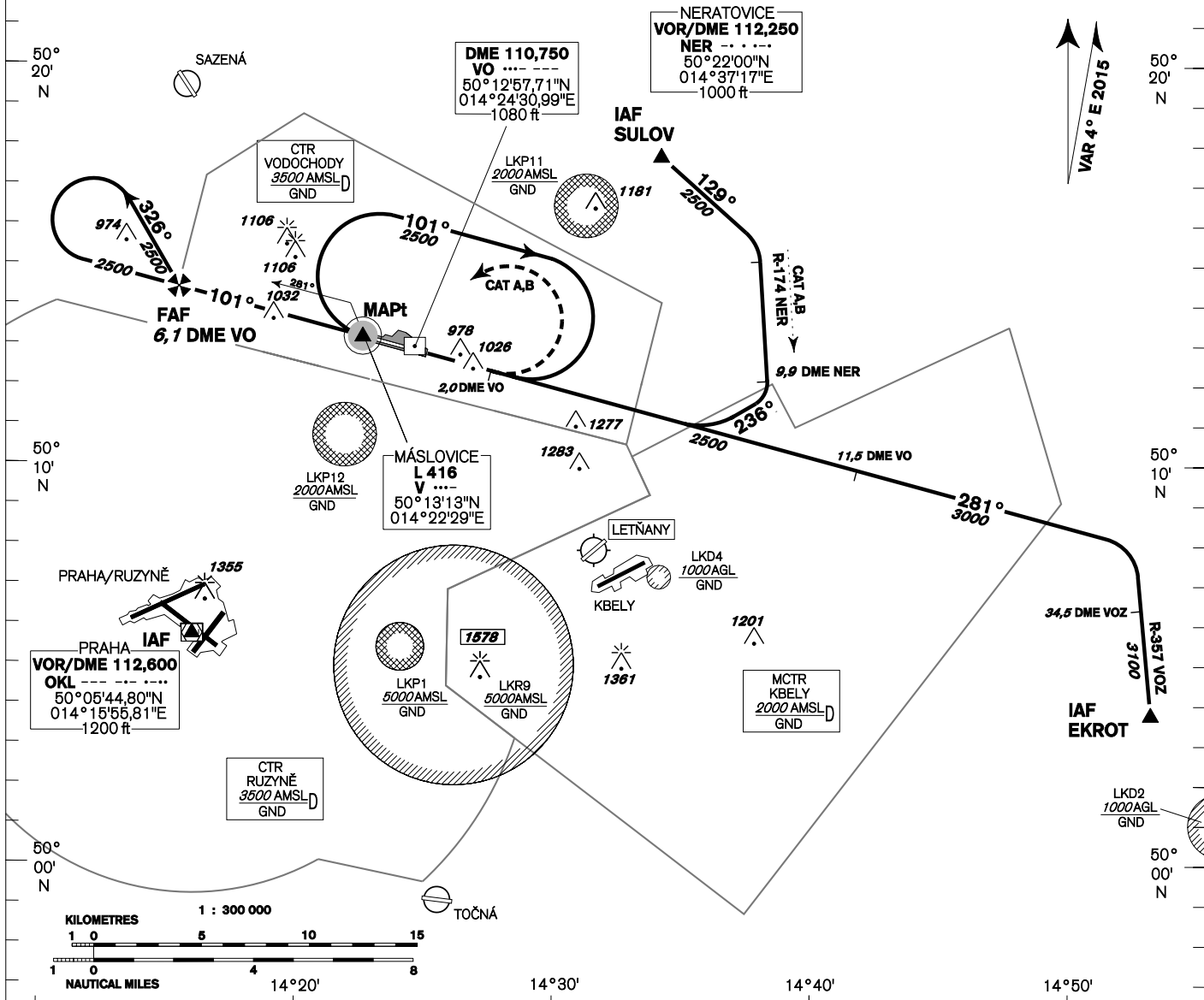


PRAHA/VODOCHODY NDB RWY 10 (ACFT CAT A,B,C)

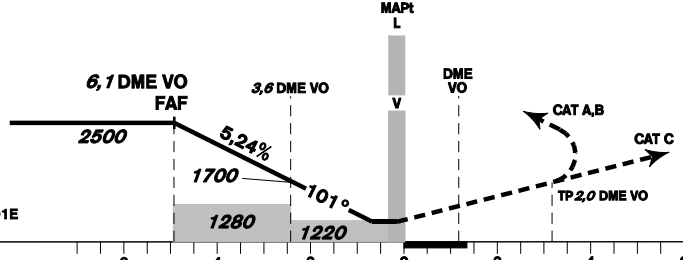
BEARINGS, TRACKS AND RADIALS ARE MAGNETIC
ALTITUDES AND ELEVATIONS IN FEET AND DISTANCES IN NM

DME REQUIRED

CAT C: Expect radar vectoring from IAF SULOV
CAT A,B,C: Expect radar vectoring from IAF OKL



TRANSITION ALTITUDE
5000ft



MISSED APPROACH:
CAT A,B: Climb on track 101°, at 2,0 DME VO turn left to L V in climbing to 2500ft AMSL
CAT C: Climb on track 101° to 2500ft AMSL, Expect radar vectoring
CAT A,B,C: In case of RCF climb on track 101° to 5,0 DME VO, turn left to L V. Climb to 2500ft AMSL

THR 501310,43N 0142243,01E
ELEV 880
NM FM THR10

OCA/OCH	A	B	C
Straight in approach	ft	1220/340	
Circling (north of AD only)	ft	1330 / 410	1500 / 580

DME VO NM	6,1	6	5	4	3	2
DIST THR NM	4,9	4,8	3,8	2,8	1,8	0,8
ALTITUDES ft	2500	2470	2150	1830	1510	1200

kt	80	100	120	140	160	180	
FAF - MAPt 4,8 NM	min:sec	3:35	2:52	2:23	2:02	1:47	1:35
Rate of descent 5,24%	ft/min	420	530	640	740	850	960

Timing is not authorized for defining the MAPt.