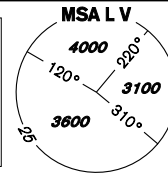


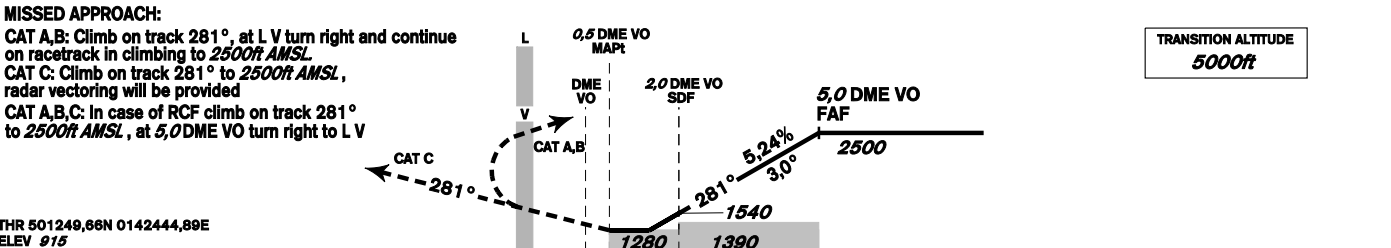
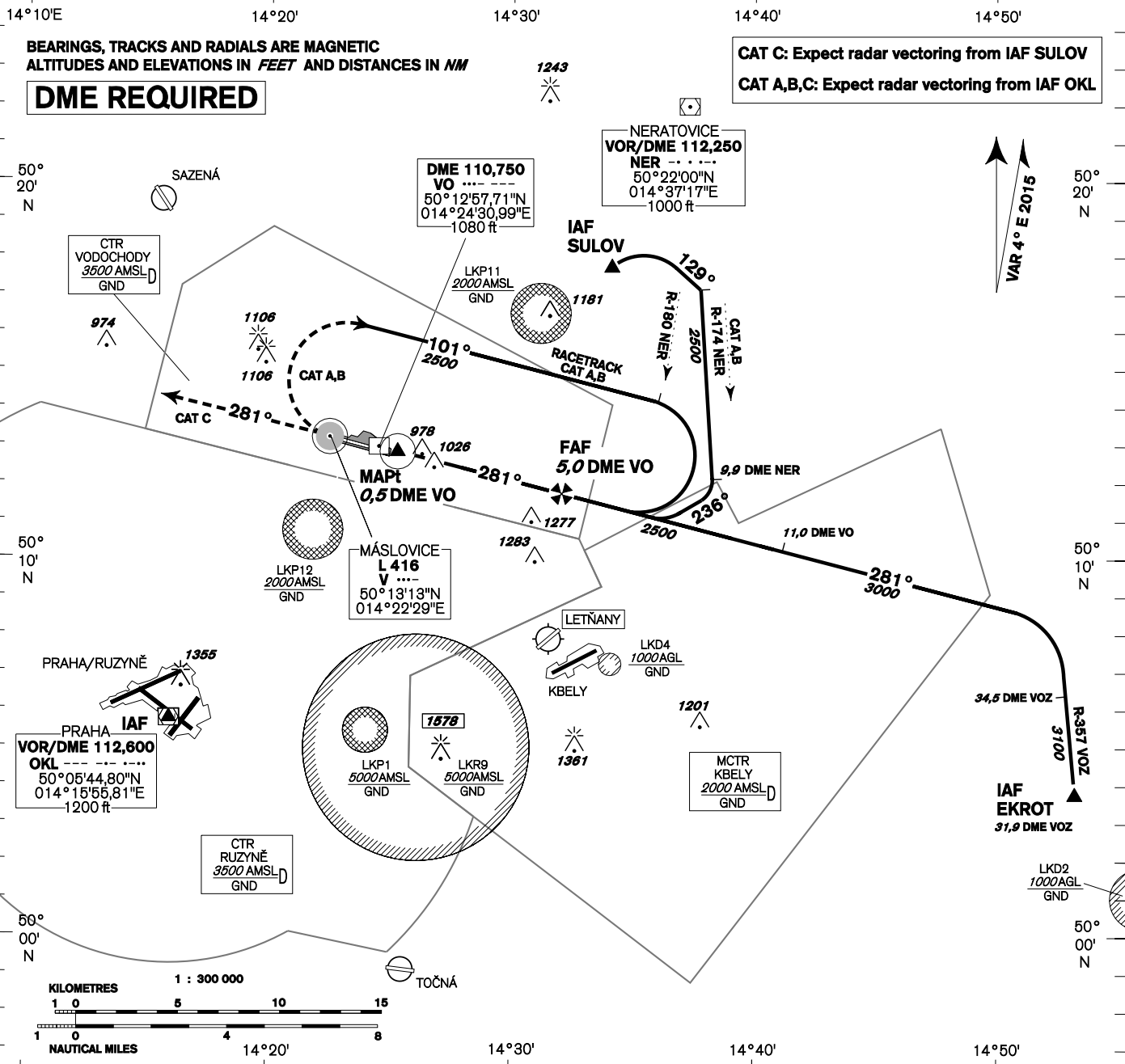
# INSTRUMENT APPROACH CHART - ICAO

AERODROME ELEV 919  
THR RWY 28 ELEV 915  
OCH RELATED TO THR RWY 28

VODOCHODY  
RADAR 127,480  
TOWER 133,080  
121,500



## PRAHA/VODOCHODY NDB RWY 28 (ACFT CAT A,B,C)



OCA/OCH		A	B	C
Straight in approach	f		1280/360	
Circling (north of AD only)	f	1330 /410	1330 /410	1500 /580

DME VO NM	5	4	3	2	1
DIST THR NM	4,8	3,8	2,8	1,8	0,8
ALTITUDES f	2500	2180	1860	1540	1230

	kt	80	100	120	140	160	180
FAF - MAPt 4,5 NM	min:sec	3:23	2:42	2:15	1:56	1:41	1:30
Rate of descent 5,24%	f/min	420	530	640	740	850	960

Timing is not authorized for defining the MAPt.