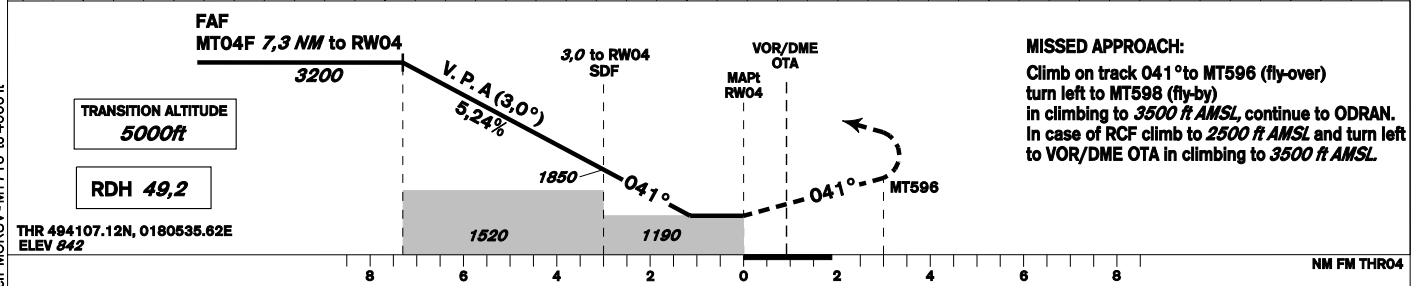
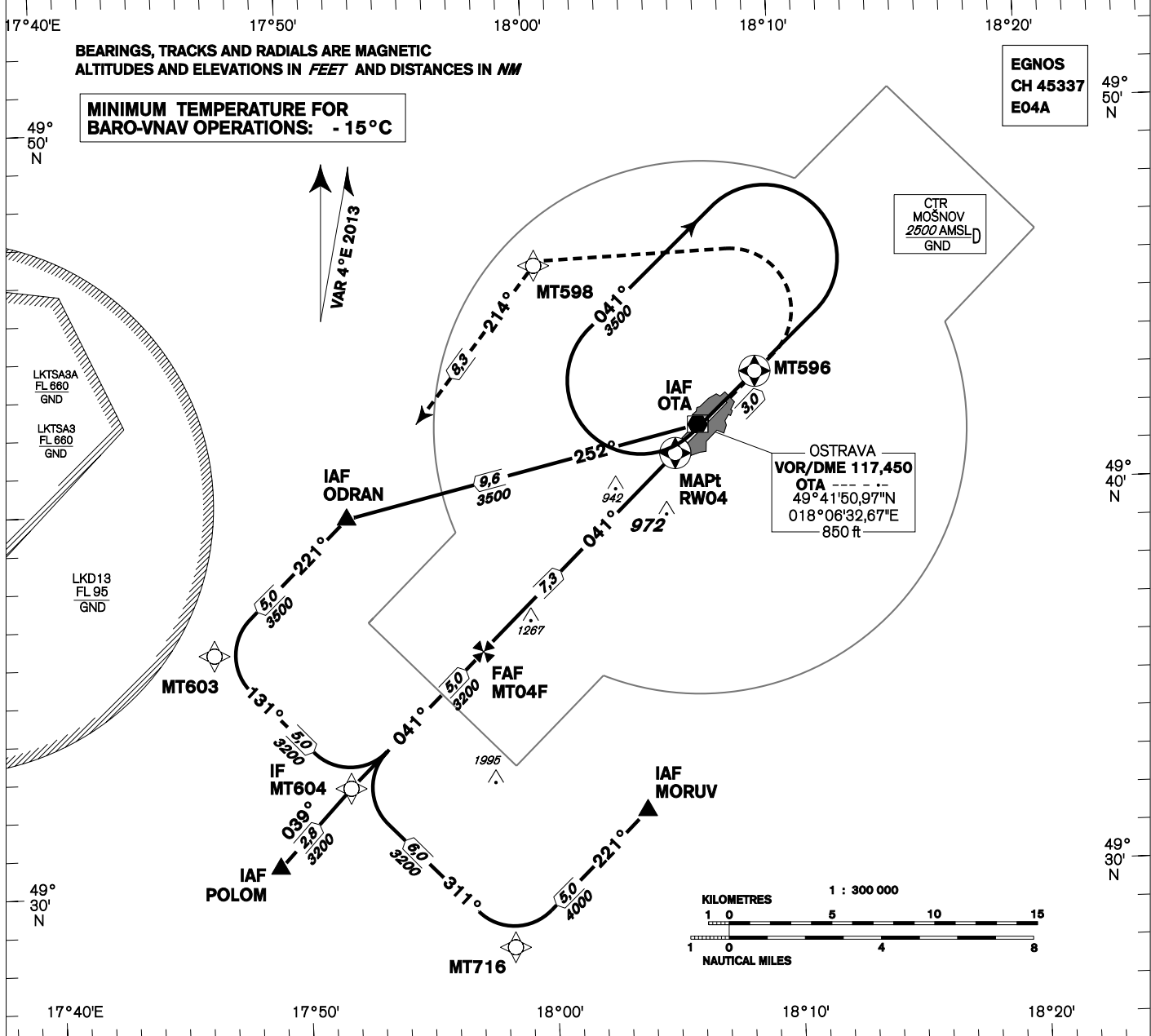


| | | | |
|---|---|---|--|
| INSTRUMENT APPROACH CHART - ICAO | AERODROME ELEV 844 THR RWY 04 ELEV 842 OCH RELATED TO AD ELEV | OSTRAVA APPROACH/RADAR 119,375 124,050 121,500 MOŠNOV TOWER 120,805 121,500 | <div style="text-align: center;"> </div> <div style="text-align: right; font-size: 1.2em; font-weight: bold;">OSTRAVA/Mošnov RNAV(GNSS)</div> <div style="text-align: right; border: 1px solid black; padding: 2px; font-weight: bold; font-size: 1.1em;">RWY 04</div> |
|---|---|---|--|



| OCA/OCH | A | B | C | D | |
|-----------|----|----------|----------|----------|-----------|
| RNAV | ft | 1190/350 | | | |
| RNAV/VNAV | ft | 1106/264 | | | |
| LPV | ft | 1082/250 | | | |
| Circling | ft | 1400/560 | 1440/600 | 1640/790 | 2100/1260 |

| | | | | | | | |
|--------------------------|---------|------|------|------|------|------|------|
| FAF - MAPt (RW04) NM | 7 | 6 | 5 | 4 | 3 | 2 | 1 |
| ALTITUDES ft | 3120 | 2800 | 2480 | 2160 | 1850 | 1530 | 1210 |
| | kt | 80 | 100 | 120 | 140 | 160 | 180 |
| FAF - MAPt (RW04) 7,3 NM | min:sec | 5:26 | 4:21 | 3:38 | 3:06 | 2:43 | 2:25 |
| Rate of descent | ft/min | 420 | 530 | 640 | 740 | 850 | 960 |

Timing is not authorized for defining the MAPt.

Posloupnost traťových bodů / Way point sequence

| Od / From IAF POLOM | | |
|---------------------|------|----------|
| POLOM | IAF | fly-by |
| MT604 | IF | fly-by |
| MT04F | FAF | fly-by |
| RW04 | MAPt | fly-over |
| MT596 | | fly-over |
| MT598 | | fly-by |
| ODRAN | | fly-by |

| Od / From IAF ODRAN a / and IAF VOR/DME OTA | | |
|--|------|----------|
| VOR/DME OTA | IAF | fly-by |
| ODRAN | IAF | fly-by |
| MT603 | | fly-by |
| MT604 | IF | fly-by |
| MT04F | FAF | fly-by |
| RW04 | MAPt | fly-over |
| MT596 | | fly-over |
| MT598 | | fly-by |
| ODRAN | | fly-by |

| Od / From IAF MORUV | | |
|---------------------|------|----------|
| MORUV | IAF | fly-by |
| MT716 | | fly-by |
| MT604 | IF | fly-by |
| MT04F | FAF | fly-by |
| RW04 | MAPt | fly-over |
| MT596 | | fly-over |
| MT598 | | fly-by |
| ODRAN | | fly-by |

| Seznam traťových bodů / Way point list | |
|--|------------------------------|
| MORUV | 49 31 47,08 N 018 03 54,51 E |
| ODRAN | 49 39 42,82 N 017 52 12,89 E |
| POLOM | 49 30 37,51 N 017 49 02,68 E |
| VOR/DME OTA | 49 41 50,97 N 018 06 32,67 E |
| MT596 | 49 43 11,33 N 018 08 56,02 E |
| MT598 | 49 46 10,76 N 018 00 09,40 E |
| MT603 | 49 36 15,10 N 017 46 40,55 E |
| MT604 | 49 32 39,25 N 017 52 00,00 E |
| MT716 | 49 28 19,92 N 017 58 22,29 E |
| MT04F | 49 36 06,73 N 017 57 32,31 E |
| RW04 | 49 41 07,16 N 018 05 35,69 E |

SBAS FAS Data Block

Vstupní data / Input Data

| Parametry / Parameters | Hodnoty / Values |
|-------------------------------------|------------------|
| Operation Type | 0 |
| SBAS Provider | 1 |
| Airport Identifier | LKMT |
| Runway | 04 |
| Runway Direction | 0 |
| Approach Performance Designator | 0 |
| Route Indicator | |
| Reference Path Data Selector | 0 |
| Reference Path Identifier | E04A |
| LTP/FTP Latitude | 494107.1200N |
| LTP/FTP Longitude | 0180535.6200E |
| LTP/FTP Ellipsoidal Height (metres) | 299.5 |
| FPAP Latitude | 494225.6600N |
| Delta FPAP Latitude (seconds) | 78.5400 |
| FPAP Longitude | 0180742.4200E |
| Delta FPAP Longitude (seconds) | 126.8000 |
| Threshold Crossing Height | 49.2 |
| TCH Units Selector | 0 |
| Glidepath Angle (degrees) | 3.00 |
| Course Width (metres) | 105.00 |
| Length Offset (metres) | 0 |
| HAL (metres) | 40.0 |
| VAL (metres) | 50.0 |

Výstupní data / Output Data

| Parametry / Parameters | Hodnoty / Values |
|------------------------|--|
| Data Block | 10 14 0D 0B 0C 04 00 00 01 34 30 05 60 97 52 15 08 C8 C3 07 B3 1F 98 65 02 A0 DE 03 EC 01 2C 01 64 00 C8 FA 33 E1 58 79 |
| Calculated CRC Value | 33E15879 |

Required Additional Data (not CRC wrapped)

| Parametry / Parameters | Hodnoty / Values |
|-------------------------------------|------------------|
| ICAO Code | LK |
| LTP/FTP Orthometric Height (metres) | 256.5 |
| FPAP Orthometric Height (metres) | 246.3 |