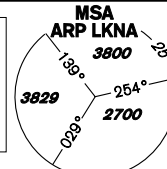


# INSTRUMENT APPROACH CHART - ICAO

AERODROME ELEV **1547**  
THR RWY 13 ELEV **1547**  
THR RWY 31 ELEV **1496**  
OCH RELATED TO THR RWY 13

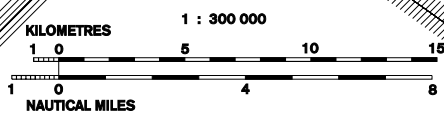
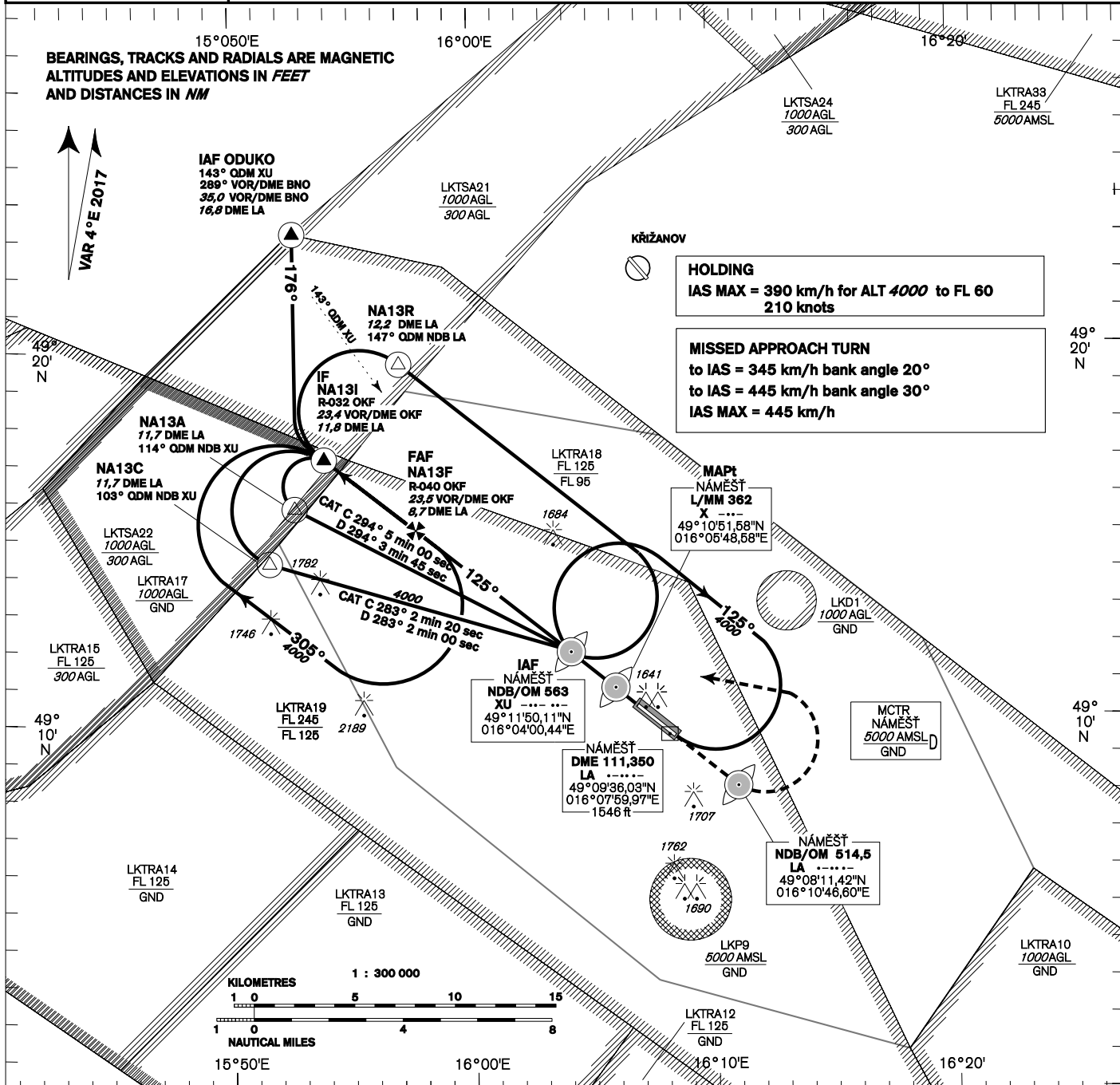
NÁMEŠŤ APPROACH/ 118,155 266,200 O/R  
RADAR  
PRECISION 283,900 123,300 reserve  
TOWER 126,505 119,830 reserve



## NÁMEŠŤ NDB RWY 13

BEARINGS, TRACKS AND RADIALS ARE MAGNETIC  
ALTITUDES AND ELEVATIONS IN FEET  
AND DISTANCES IN NM

VAR 4° E 2017



R-040 VOR/DME OKF  
23,5 VOR/DME OKF  
8,7 DME LA FAF

IAF NDB OM XU 3,45 DME LA  
MAPt L MM X 1,97 DME LA

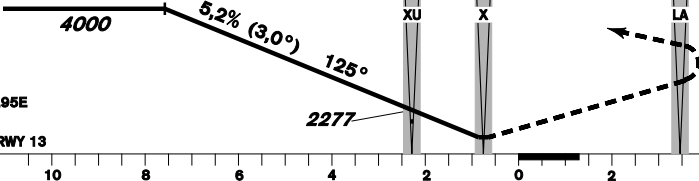
NDB OM LA 2,3 DME LA

MISSED APPROACH:  
Proceed to NDB LA  
in climbing 4000ft  
passing NDB turn left to NDB XU

In the case of RCF on final approach track  
without landing clearance  
follow the missed approach procedure

TRANSITION ALTITUDE  
**5000ft**

THR 491022.96N 0160641.95E  
ELEV 1547  
DISTANCE IN NM FROM THR RWY 13



OCA/OCH		A	B	C	D	
Straight-in Approach	NDB ft		1857 / 308			
	PAR ft		1857 / 308			
Circling (NORTH ONLY)	ft	1936	1988	2086	2185	

FAF - MAPt 6,9 NM	kt	81	100	122	141	162	184
Rate of descent	km/h	150	185	225	260	300	340
	min:sec	5:05	4:07	3:23	2:56	2:32	2:14
	m / s	2,2	2,7	3,3	3,8	4,4	5,0
	ft / min	433	532	650	748	866	984

Timing is not authorized for defining the MAPt.

change: new procedures, MISSED APPROACH, table

Seznam traťových bodů / Way point list		
XU (NDB)	49 11 50 N	016 04 00 E
X (L)	49 10 52 N	016 05 49 E
NA13A	49 15 44 N	015 52 45 E
NA13C	49 14 16 N	015 51 42 E
NA13R	49 19 36 N	015 57 04 E
NA13I	49 17 03 N	015 53 58 E
NA13F	49 15 08 N	015 57 42 E
LA (NDB)	49 08 12 N	016 10 47 E