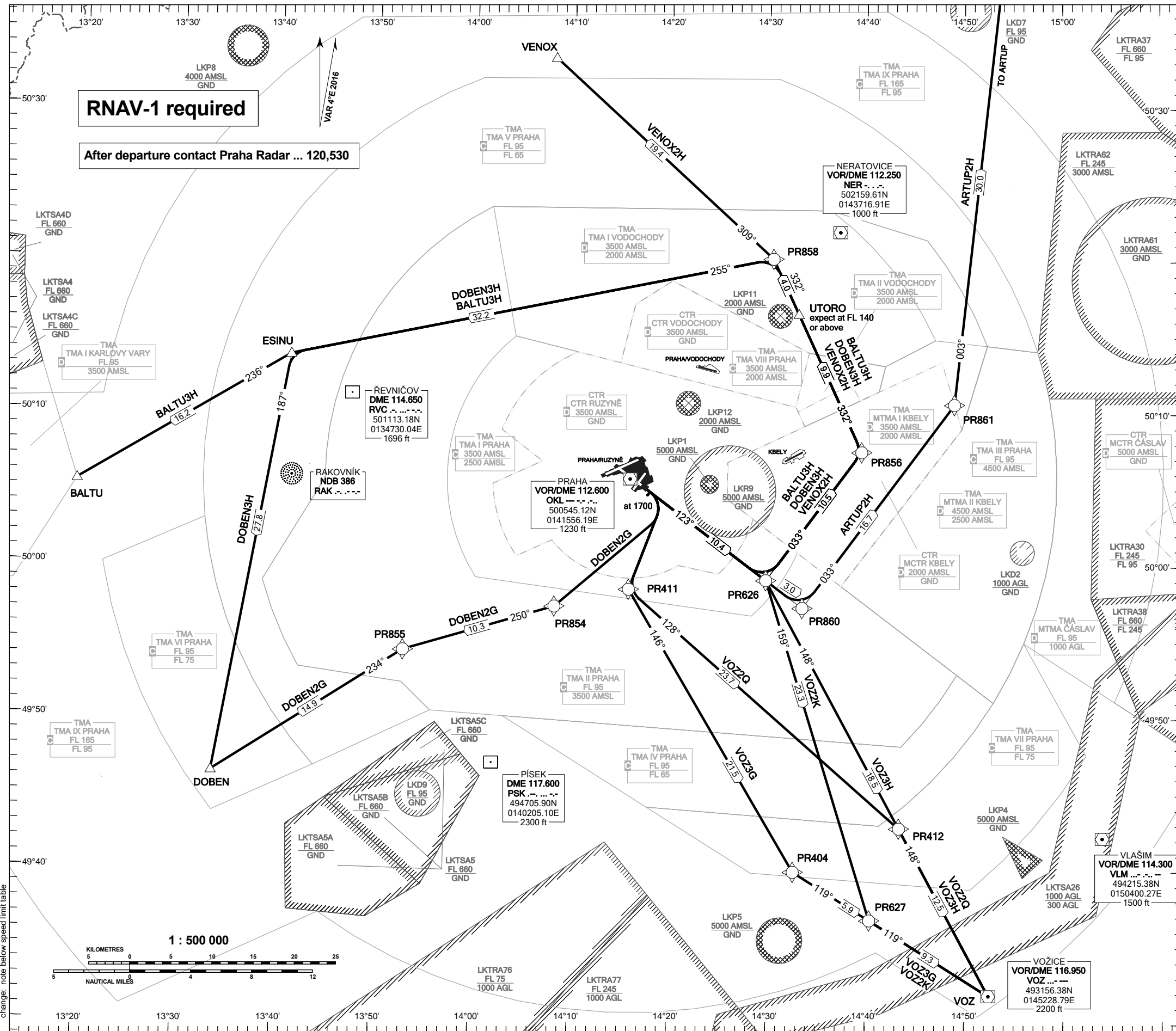


**RNAV STANDARD DEPARTURE CHART -  
INSTRUMENT (SID) - ICAO**

**PRAHA/RUZYŇĚ  
RNAV SID RWY 12**

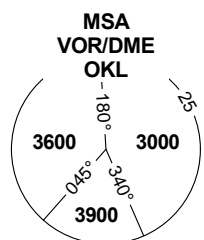


**RNAV-1 required**  
After departure contact Praha Radar ... 120,530

**VOZ 2Q**  
Only for propeller driven aircraft between 0500 - 2100 (0400 - 2000) UTC when RWY 24 is in use.

**VOZ 2K**  
Only for propeller driven aircraft between 0500 - 2100 (0400 - 2000) UTC when RWY 06 is in use.

PRAHA RADAR	120.530
RUZYŇĚ RADAR	127.580
SUPPLEMENTARY FREQ APP	118.310
RUZYŇĚ DELIVERY	119.010
SUPPLEMENTARY FREQ TWR	120.060
RUZYŇĚ TOWER	118.110
SUPPLEMENTARY FREQ TWR	134.560
RUZYŇĚ GROUND	121.910
RUZYŇĚ ATIS	122.160
EMERGENCY FREQ	121.500



**TRANSITION ALTITUDE  
5000**

DEPARTURE SPEED LIMIT BELOW FL 100	
JETS	MAX IAS 250 KT
PROPS	MAX IAS 180 KT

see AIP AD 2-LKPR-33, 2.22.4.3.5

BEARINGS, TRACKS AND  
RADIALS ARE MAGNETIC  
ALTITUDES AND ELEVATIONS  
ARE IN FEET  
DISTANCES ARE IN NM

change: note below speed limit table