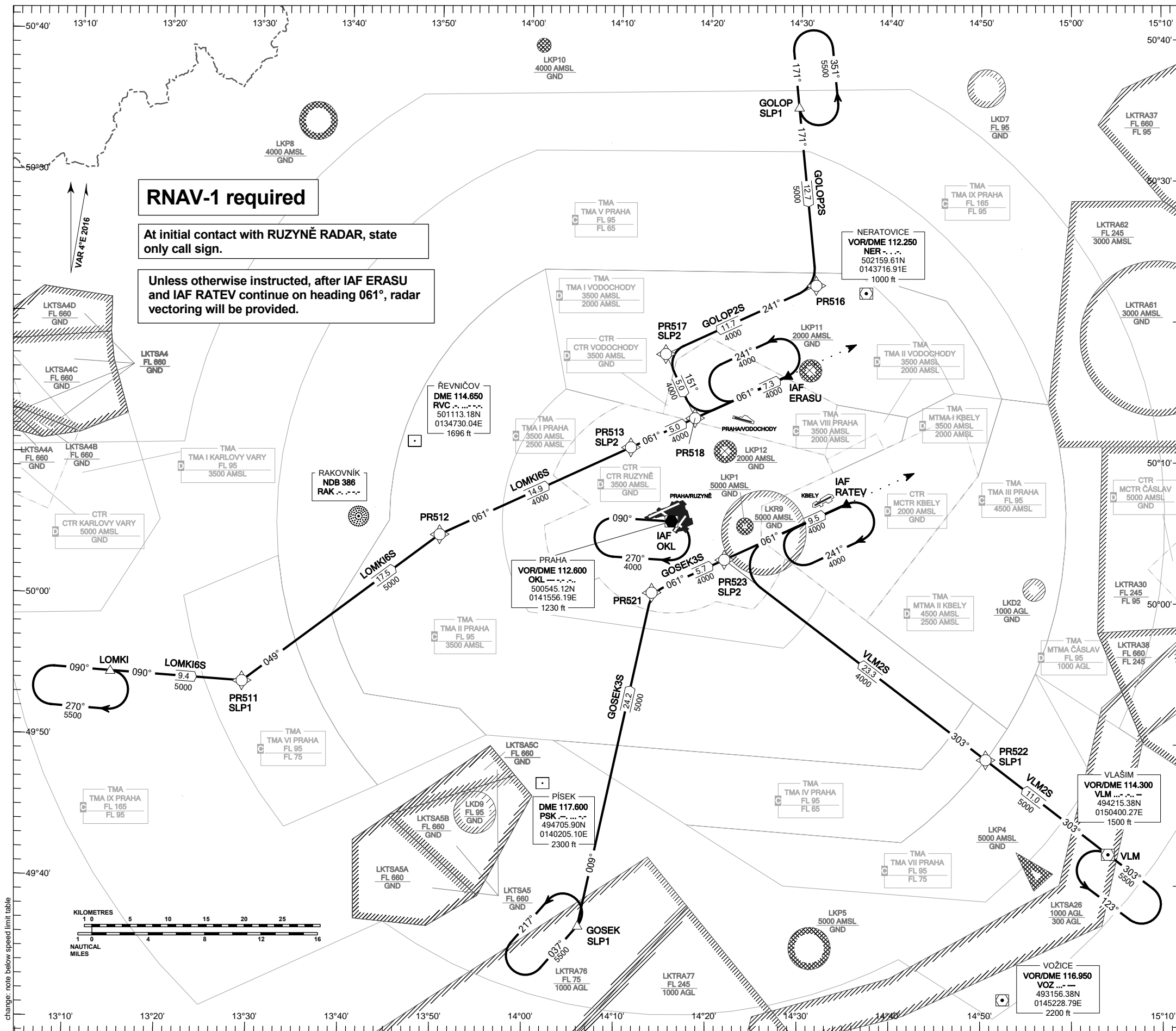


**RNAV STANDARD ARRIVAL CHART - INSTRUMENT  
(STAR) - ICAO**

**PRAHA/RUZYŇĚ  
RNAV STAR RWY 24**

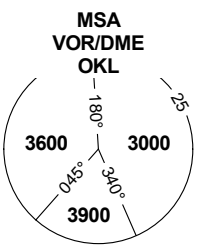


**RNAV-1 required**

At initial contact with RUZYŇĚ RADAR, state only call sign.

Unless otherwise instructed, after IAF ERASU and IAF RATEV continue on heading 061°, radar vectoring will be provided.

PRAHA RADAR	120.530
RUZYŇĚ RADAR	127.580
SUPPLEMENTARY FREQ APP	118.310
RUZYŇĚ DELIVERY	119.010
SUPPLEMENTARY FREQ TWR	120.060
RUZYŇĚ TOWER	118.110
SUPPLEMENTARY FREQ TWR	134.560
RUZYŇĚ GROUND	121.910
RUZYŇĚ ATIS	122.160
EMERGENCY FREQ	121.500



TRANSITION ALTITUDE  
5000

SPEED LIMITING POINT	
SLP1	MAX IAS 250 KT
SLP2	MAX IAS 220 KT

BEARINGS, TRACKS AND RADIALS ARE MAGNETIC  
ALTITUDES AND ELEVATIONS ARE IN FEET  
DISTANCES ARE IN NM

see AIP AD 2-LKPR-30, 2.22.4.2.1.