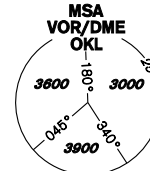


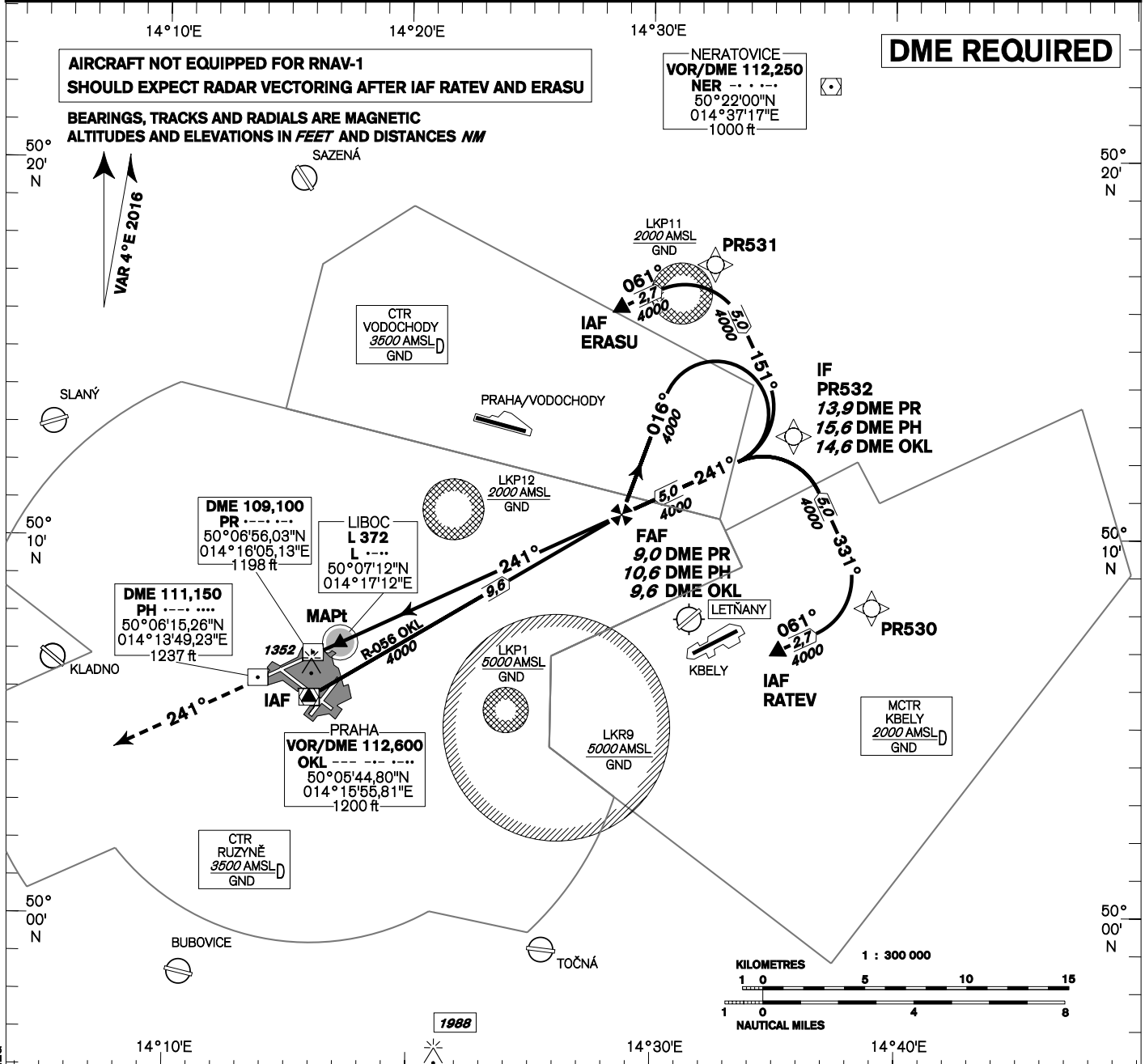
# INSTRUMENT APPROACH CHART - ICAO

AERODROME ELEV **1234**  
THR RWY 24 ELEV **1158**  
OCH RELATED TO THR RWY 24

PRAHA RADAR 127,580  
RUZYNĚ RADAR 119,010  
SUPPLEMENTARY FREQ. 136,080  
121,500  
134,560  
RUZYNĚ TOWER SUPPLEMENTARY FREQ. 118,110  
121,500



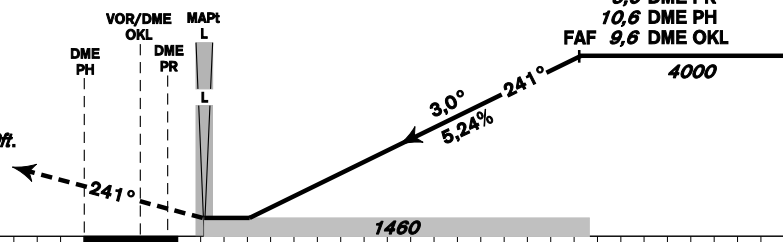
## PRAHA/Ruzyně NDB RWY 24



**MISSED APPROACH:**

Climb on track 241° to 4000ft, radar vectoring will be provided.  
In case of RCF climb on track 241° to 4000ft, at 10NM DME OKL turn right to OKL and climb to 5000ft.

THR 500657.42N, 0141624.12E  
ELEV 1158



TRANSITION ALTITUDE  
**5000ft**

change: RUZYNĚ TWR and SUPPLEMENTARY TWR FREQ

OCA/OCH	A	B	C	D
Straight-in Approach	1460/300			
Circling	see the circling approach chart			

DME PR	NM	9	8	7	6	5	4	3	2	1
DME PH	NM	10,6	9,6	8,6	7,6	6,6	5,6	4,6	3,6	2,6
DME OKL	NM	9,6	8,6	7,7	6,7	5,7	4,7	3,7	2,8	1,9
DIST THR	NM	8,8	7,8	6,8	5,8	4,8	3,8	2,8	1,8	0,8
ALTITUDES	ft	4010	3690	3370	3060	2740	2420	2100	1780	1460

FAF - MAPt	8,2 NM	kt	80	100	120	140	160	180
Rate of descent (5,24%)	ft/min	min:sec	6:09	4:55	4:06	3:31	3:04	2:44
Timing is not authorized for defining the MAPt.		ft/min	420	530	640	740	850	960