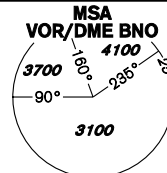


INSTRUMENT APPROACH CHART - ICAO

AERODROME ELEV **778**
THR RWY 09 ELEV **764**
OCH RELATED TO THR RWY 09

TUŘANY/TOWER 119,605
125,430
121,500
BRNO
APPROACH/RADAR 127,350
120,555
121,500



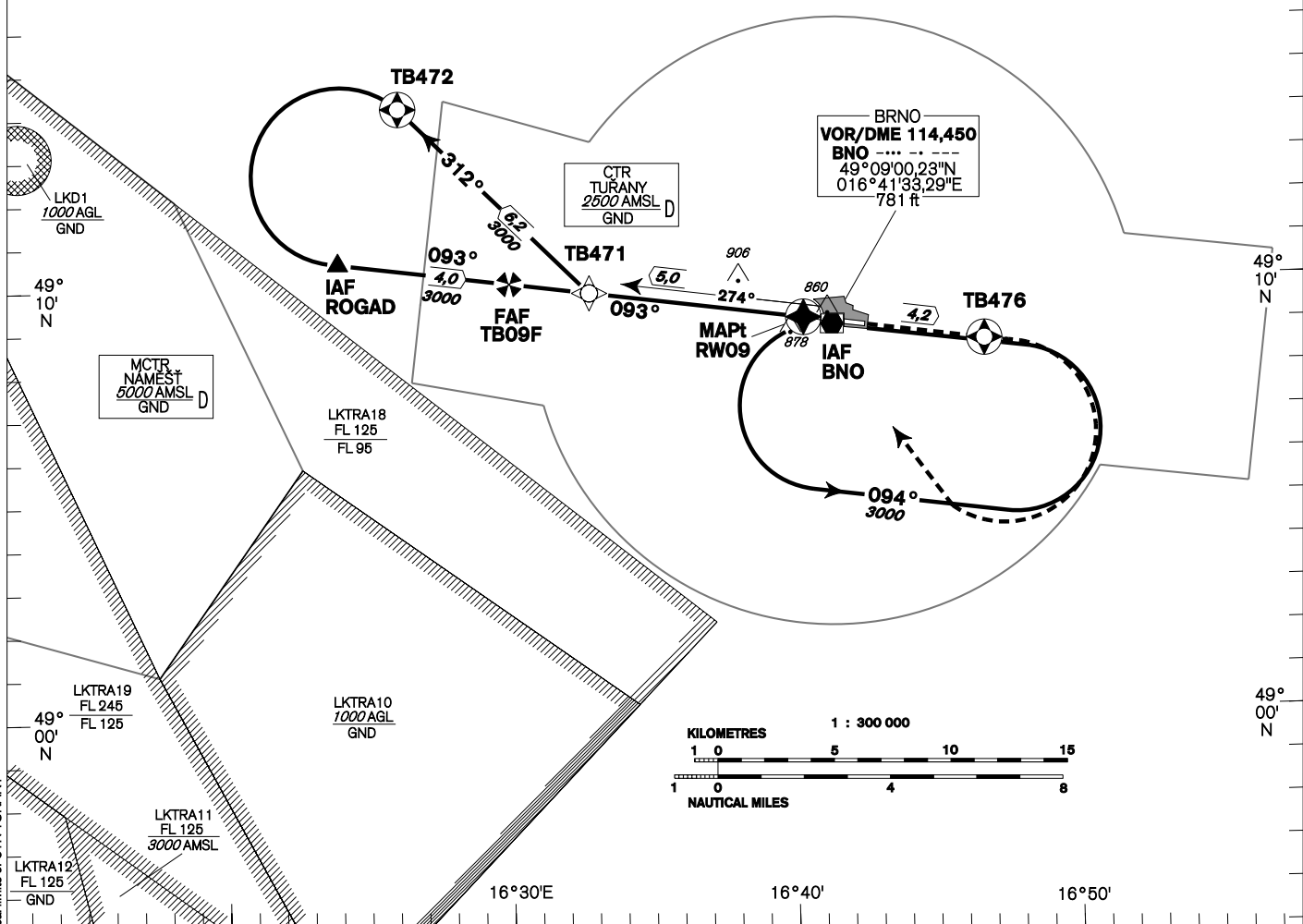
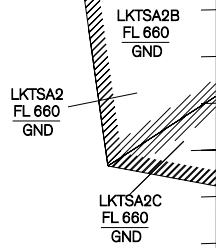
BRNO/Tuřany RNAV (GNSS) RWY 09

VAR 4° E 2015

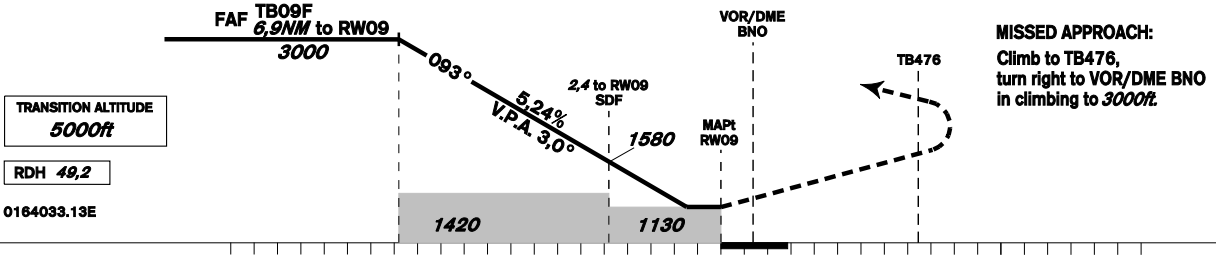
MINIMUM TEMPERATURE FOR
BARO-VNAV OPERATIONS: **-15°C**
INITIAL AND MISSED APPROACH
TURN SPEED LIMITED TO MAX IAS 220 KT

BEARINGS, TRACKS AND RADIALS ARE MAGNETIC
ALTITUDES AND ELEVATIONS IN **FEET**
AND DISTANCES IN **NM**

EGNOS
CH 52843
E09A



change: horizontal limits of LKTS2A2, B, C and vertical limits of CTR TUŘANY



THR 490910.34N 0184033.13E
ELEV 764
NM FM THRO9

TRANSITION ALTITUDE
5000ft
RDH **48,2**

MISSED APPROACH:
Climb to TB476,
turn right to VOR/DME BNO
in climbing to 3000ft.

OCA/OCH	A	B	C	D
LNAV	R	1130/360		
LNAV/VNAV	R	1120/350		
LPV	R	1060/300		
Circling	R	1210 R/-	1440 R/-	1560 R/- 1740 R/-

DIST THR NM	6	5	4	3	2	1
ALTITUDES ft	2720	2410	2090	1770	1450	1130

	kt	80	100	120	140	160	180
FAF - MAPt 6,9 NM	min:sec	5:09	4:07	3:26	2:57	2:35	2:17
Rate of descent	ft/min	420	530	640	740	850	960

Timing is not authorized for defining the MAPt.

Posloupnost traťových bodů / Waypoint sequence

Od / From IAF ROGAD		
ROGAD	IAF	fly-by
TB09F	FAF	fly-by
RW09	MAPt	fly-over
TB476		fly-over
VOR/DME BNO		

Od / From IAF VOR/DME BNO		
VOR/DME BNO	IAF	fly-by
TB471		fly-by
TB472		fly-over
ROGAD	IF	fly-by
TB09F	FAF	fly-by
RW09	MAPt	fly-over
TB476		fly-over
VOR/DME BNO		

Seznam traťových bodů / Way point list		
ROGAD	49 10 34,18 N	016 24 08,14 E
VOR/DME BNO	49 09 00,23 N	016 41 33,29 E
TB471	49 09 49,20 N	016 33 00,04 E
TB472	49 14 09,35 N	016 26 20,84 E
TB09F	49 10 03,58 N	016 30 10,89 E
RW09	49 09 10,34 N	016 40 33,13 E
TB476	49 08 37,07 N	016 46 55,67 E

SBAS FAS Data Block

Vstupní data / Input Data

Parametry / Parameters	Hodnoty / Values
Operation Type	0
SBAS Provider	1
Airport Identifier	LKTB
Runway	09
Runway Direction	0
Approach Performance Designator	0
Route Indicator	
Reference Path Data Selector	0
Reference Path Identifier	E09A
LTP/FTP Latitude	490910.3400N
LTP/FTP Longitude	0164033.1300E
LTP/FTP Ellipsoidal Height (metres)	278.0
FPAP Latitude	490859.1200N
Delta FPAP Latitude (seconds)	-11.2200
FPAP Longitude	0164242.8300E
Delta FPAP Longitude (seconds)	129.7000
Threshold Crossing Height	49.2
TCH Units Selector	0
Glidepath Angle (degrees)	3.00
Course Width (metres)	105.00
Length Offset (metres)	0
HAL (metres)	40.0
VAL (metres)	50.0

Výstupní data / Output Data

Parametry / Parameters	Hodnoty / Values
Data Block	10 02 14 0B 0C 09 00 00 01 39 30 05 88 18 18 15 D4 10 28 07 DC 1E 58 A8 FF 48 F5 03 EC 01 2C 01 64 00 C8 FA 93 F2 DA 53
Calculated CRC Value	93F2DA53

Required Additional Data (not CRC wrapped)

These additional data are not required for CRC calculation, but they need to be provided to datahouses for procedure coding in ARINC 424 records.

Parametry / Parameters	Hodnoty / Values
ICAO Code	LK
LTP/FTP Orthometric Height (metres)	233.0
FPAP Orthometric Height (metres)	234.9