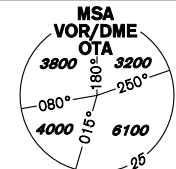
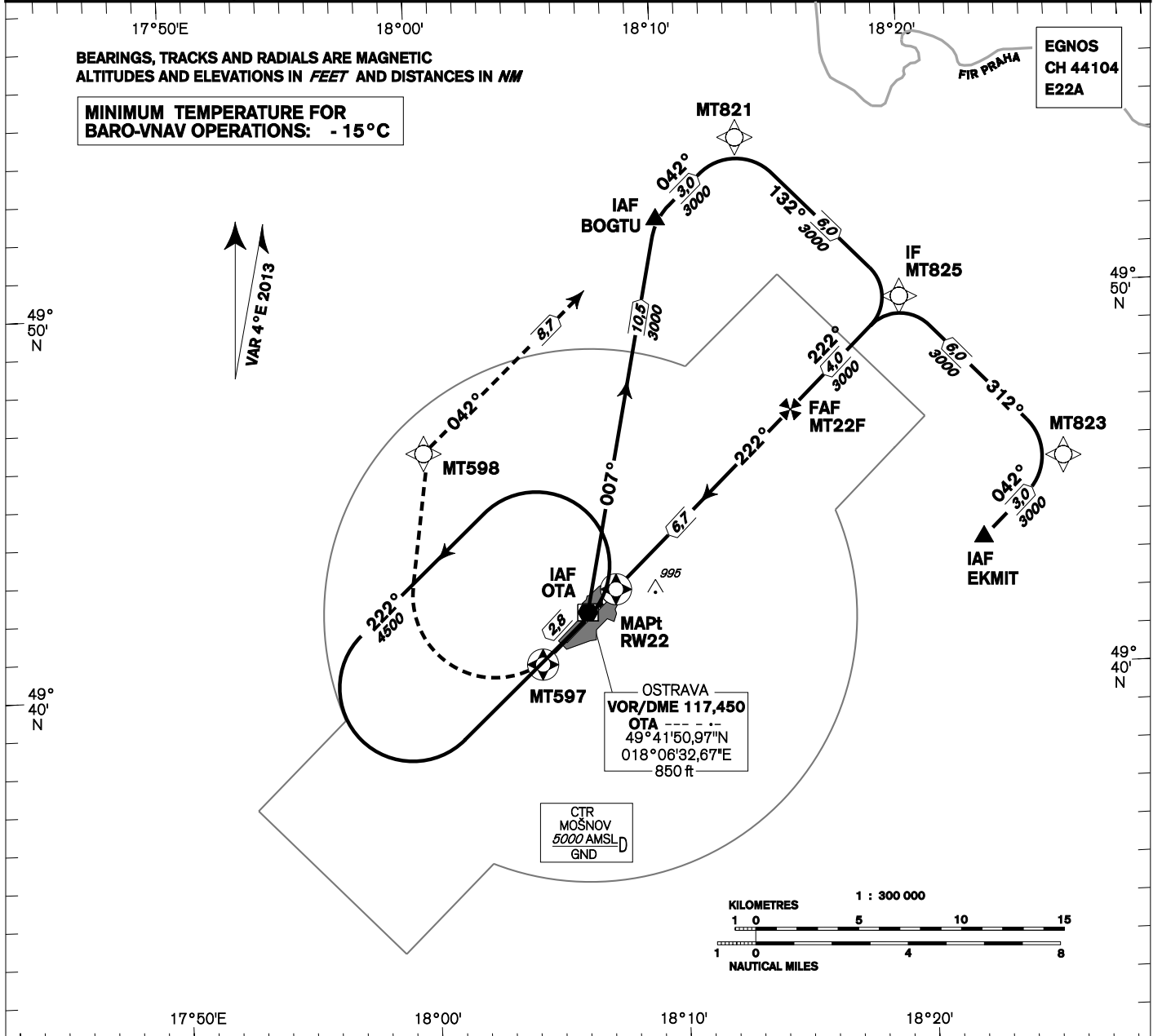
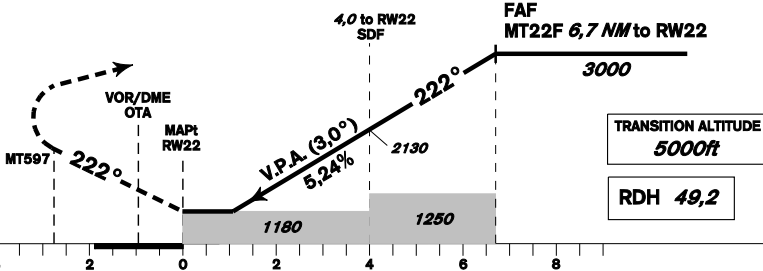


INSTRUMENT APPROACH CHART - ICAO	AERODROME ELEV 844 THR RWY 22 ELEV 808 OCH RELATED TO THR RWY 22	OSTRAVA APPROACH/RADAR 119,375 124,050 121,500 MOŠNOV TOWER 120,805 121,500	OSTRAVA/Mošnov RNAV (GNSS) RWY 22 
---	--	---	---



MISSED APPROACH:
 Climb on track 222° to MT597 (fly-over)
 turn right to MT598 (fly-by)
 In climbing to 3000 ft AMSL, continue to BOGTU.
 In case of RCF climb to 2500 ft AMSL and turn right to VOR/DME OTA in climbing to 4500 ft AMSL.



4,0 to RW22 SDF
FAF MT22F 6,7 NM to RW22
3000

TRANSITION ALTITUDE 5000ft
RDH 49,2

THR 494225.66N, 0180742.42E
ELEV 808

OCA/OCH		A	B	C	D						
LNAV	ft	1180/370									
LNAV/VNAV	ft	1093/285									
LPV	ft	1062/254	1074/266	1083/275	1093/285						
Circling	ft	1400/560	1440/600	1640/790	2100/1260						

DIST TO THR (RW22) NM		6	5	4	3	2	1
ALTITUDES ft		2770	2450	2130	1810	1500	1180

		kt	80	100	120	140	160	180
FAF - MAPt (RW22) 6,7 NM	min:sec	5:02	4:01	3:21	2:52	2:31	2:14	
	Rate of descent ft/min	420	530	640	740	850	960	

Timing is not authorized for defining the MAPt.

change: OCA value 1093/285

Posloupnost traťových bodů / Way point sequence

Od / From IAF BOGTU a / and IAF VOR/DME OTA		
VOR/DME OTA	IAF	fly-by
BOGTU	IAF	fly-by
MT821		fly-by
MT825	IF	fly-by
MT22F	FAF	fly-by
RW22	MAPt	fly-over
MT597		fly-over
MT598		fly-by
BOGTU		fly-by

Od / From IAF EKMIT		
EKMIT	IAF	fly-by
MT823		fly-by
MT825	IF	fly-by
MT22F	FAF	fly-by
RW22	MAPt	fly-over
MT597		fly-over
MT598		fly-by
BOGTU		fly-by

Seznam traťových bodů / Way point list	
BOGTU	49 52 04,59 N 018 09 55,48 E
EKMIT	49 43 23,64 N 018 22 40,63 E
VOR/DME OTA	49 41 50,97 N 018 06 32,67 E
MT597	49 40 31,74 N 018 04 38,75 E
MT598	49 46 10,76 N 018 00 09,40 E
MT821	49 54 08,55 N 018 13 16,88 E
MT823	49 45 27,22 N 018 26 01,91 E
MT825	49 49 48,05 N 018 19 39,97 E
MT22F	49 47 03,00 N 018 15 11,58 E
RW22	49 42 25,65 N 018 07 42,41 E

SBAS FAS Data Block

Vstupní data / Input Data

Parametry / Parameters	Hodnoty / Values
Operation Type	0
SBAS Provider	1
Airport Identifier	LKMT
Runway	22
Runway Direction	0
Approach Performance Designator	0
Route Indicator	
Reference Path Data Selector	0
Reference Path Identifier	E22A
LTP/FTP Latitude	494225.6600N
LTP/FTP Longitude	0180742.4200E
LTP/FTP Ellipsoidal Height (metres)	289.3
FPAP Latitude	494107.1200N
Delta FPAP Latitude (seconds)	-78.5400
FPAP Longitude	0180535.6200E
Delta FPAP Longitude (seconds)	-126.8000
Threshold Crossing Height	49.2
TCH Units Selector	0
Glidepath Angle (degrees)	3.00
Course Width (metres)	105.00
Length Offset (metres)	0
HAL (metres)	40.0
VAL (metres)	50.0

Výstupní data / Output Data

Parametry / Parameters	Hodnoty / Values
Data Block	10 14 0D 0B 0C 16 00 00 01 32 32 05 F8 FC 54 15 A8 A6 C7 07 4D 1F 68 9A FD 60 21 FC EC 01 2C 01 64 00 C8 FA 33 9E 41 BC
Calculated CRC Value	339E41BC

Required Additional Data (not CRC wrapped)

Parametry / Parameters	Hodnoty / Values
ICAO Code	LK
LTP/FTP Orthometric Height (metres)	246.3
FPAP Orthometric Height (metres)	256.5