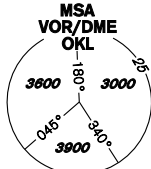
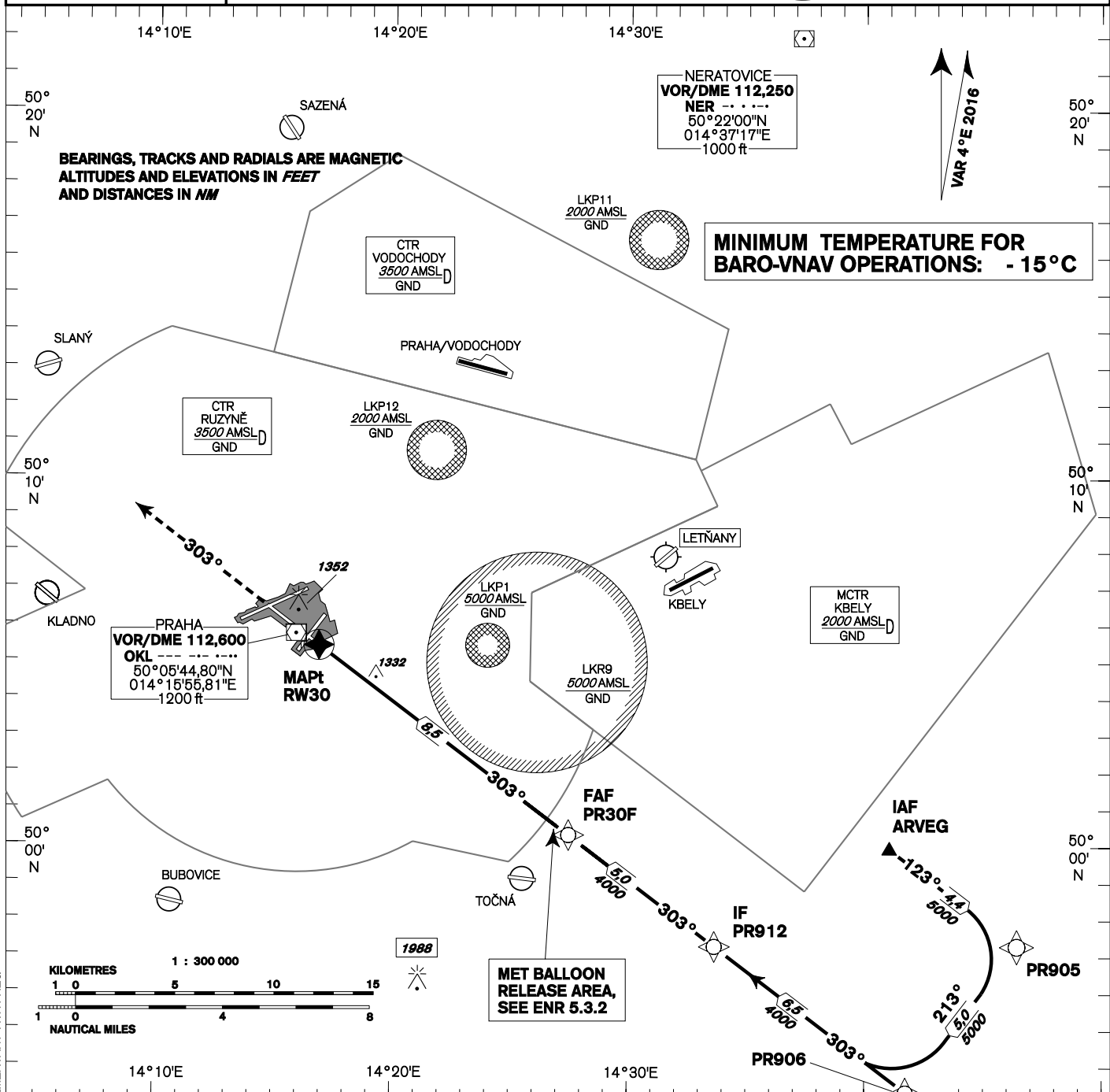
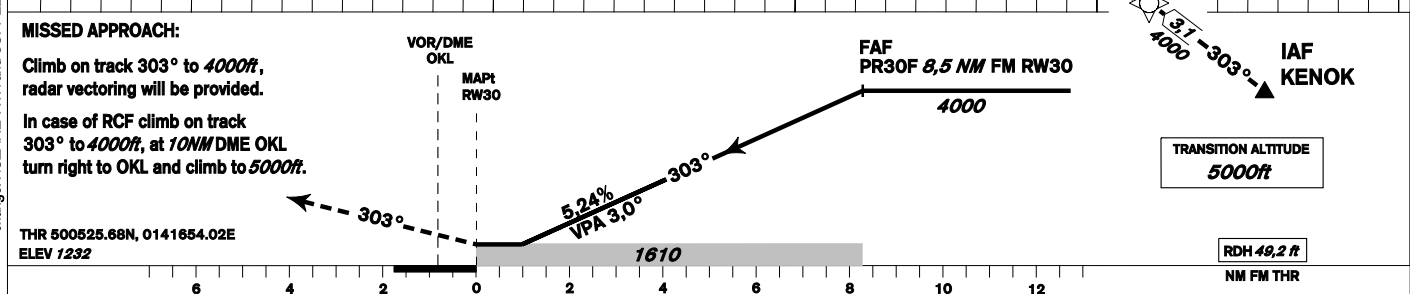


INSTRUMENT APPROACH CHART - ICAO	AERODROME ELEV 1234 THR RWY 30 ELEV 1232 OCH RELATED TO THR RWY 30	PRAHA RADAR 127,580 RUZYNĚ RADAR 119,010 SUPPLEMENTARY FREQ. 136,080 121,500 RUZYNĚ TOWER 134,560 SUPPLEMENTARY FREQ. 118,110 121,500	
---	---	--	---

**PRAHA/Ruzyně
RNAV (GNSS)
RWY 30**



MISSED APPROACH:
Climb on track 303° to 4000ft, radar vectoring will be provided.
In case of RCF climb on track 303° to 4000ft, at 10NM DME OKL turn right to OKL and climb to 5000ft.



FAF
PR30F 8,5 NM FM RW30
4000

TRANSITION ALTITUDE
5000ft

RDH 49,2 ft
NM FM THR

OCA/OCH		A	B	C	D														
LNAV	ft	1610 / 370																	
LNAV / VNAV	ft	1516 / 284																	
Circling	see the circling approach chart																		

DIST THR (MAPt) NM	9	8	7	6	5	4	3	2	1
ALTITUDES ft	4150	3830	3510	3190	2870	2550	2240	1920	1600
FAF - MAPt 8,5 NM	kt	80	100	120	140	160	180		
Rate of descent	ft/min	420	530	640	740	850	960		

Timing is not authorized for defining the MAPt.

Seznam traťových bodů / Way point list

PR905	49 57 17,86 N 014 46 25,19 E
KENOK	49 51 26,01 N 014 45 34,00 E
PR906	49 53 19,27 N 014 41 43,75 E
PR912	49 57 14,58 N 014 33 44,54 E
PR30F	50 00 18,07 N 014 27 29,23 E
RW30	50 05 25,68 N 014 16 54,02 E
ARVEG	49 59 56,37 N 014 41 02,25 E

Posloupnost traťových bodů / Way point sequence

Od/from IAF ARVEG

ARVEG	IAF	fly-by
PR905		fly-by
PR906		fly-by
PR912	IF	fly-by
PR30F	FAF	fly-by
RW30	MAPt	fly-over

Posloupnost traťových bodů / Way point sequence

Od/from IAF KENOK

KENOK	IAF	fly-by
PR906		fly-by
PR912	IF	fly-by
PR30F	FAF	fly-by
RW30	MAPt	fly-over