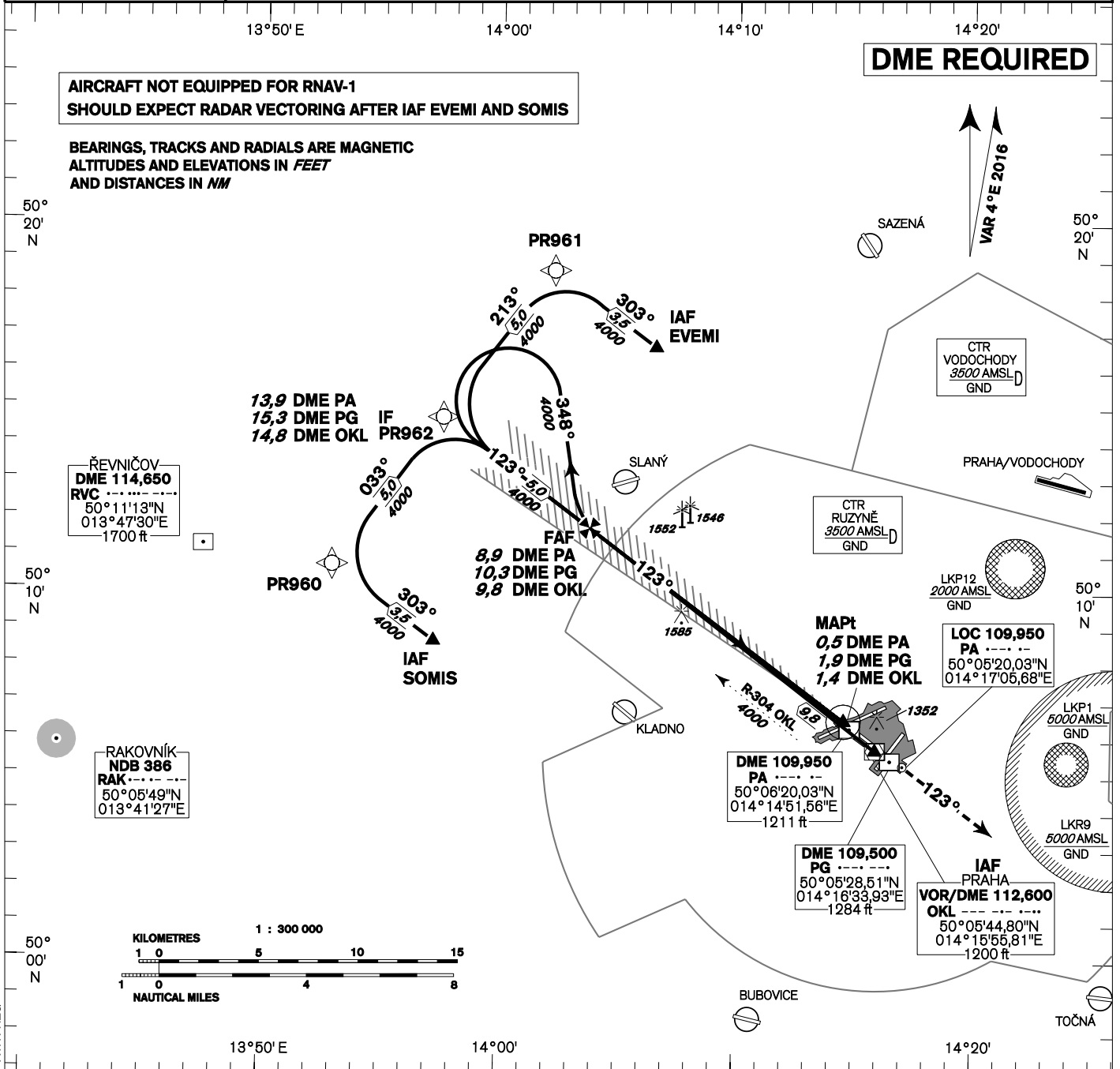


INSTRUMENT APPROACH CHART - ICAO	<p>AERODROME ELEV 1234 THR RWY 12 ELEV 1160</p> <p>OCH RELATED TO THR RWY 12</p>	<p>PRAHA RADAR 127,580 RUZYŇNÉ RADAR 119,010 SUPPLEMENTARY FREQ 136,080 121,500</p> <p>RUZYŇNÉ TOWER 134,560 SUPPLEMENTARY FREQ 118,110 121,500</p>	<p>MSA VOR/DME OKL</p> <p style="font-size: 2em; font-weight: bold;">PRAHA/Ruzyně ILS RWY 12</p>
---	--	---	--



**AIRCRAFT NOT EQUIPPED FOR RNAV-1
SHOULD EXPECT RADAR VECTURING AFTER IAF EVEMI AND SOMIS**

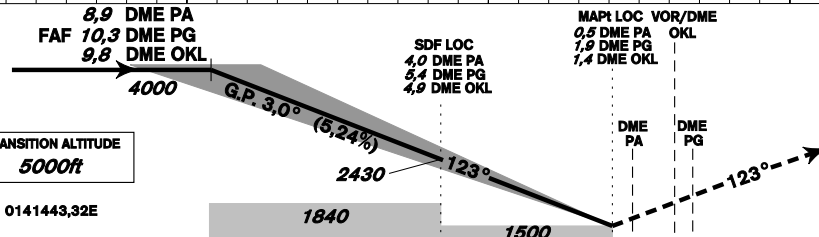
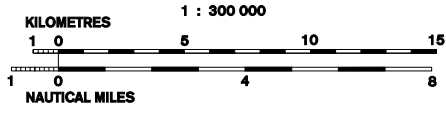
**BEARINGS, TRACKS AND RADIALS ARE MAGNETIC
ALTITUDES AND ELEVATIONS IN FEET
AND DISTANCES IN NM**

DME REQUIRED

VAR 4° E 2016

ŘEVNIČOV
DME 114,650
RVC
50°11'13"N
013°47'30"E
1700 ft

RAKOVNÍK
NDB 386
RAK
50°05'49"N
013°41'27"E



MISSED APPROACH:
Climb on track 123° to 4000ft, radar vectoring will be provided.
In case of RCF climb on track 123° to 4000ft, at 10NM DME OKL turn right to OKL and climb to 5000ft.

change: RUZYŇNÉ TWR and SUPPLEMENTARY TWR FREQ

THR 500628,84N 0141443,32E
ELEV 1160

OCA/OCH		A	B	C	D
Straight-in Approach	Cat I	ft 1310 / 150	1325 / 165	1341 / 181	1357 / 197
	LOC	ft 1500 / 340			
Circling		see the circling approach chart			

		9	8	7	6	5	4	3	2	1
DME PA	NM	9,9	8,9	7,9	6,9	5,9	4,9	3,9	2,9	1,9
DME PG	NM	10,4	9,4	8,4	7,4	6,4	5,4	4,4	3,4	2,4
DME OKL	NM	9,9	8,9	7,9	6,9	5,9	4,9	3,9	2,9	1,9
THR DIST	NM	8,8	7,8	6,8	5,8	4,8	3,8	2,8	1,8	0,8
ALTITUDES	ft	4020	3700	3390	3070	2750	2430	2110	1790	1480

FAF - MAPt 8,4 NM	kt	80	100	120	140	160	180
Rate of descent	min:sec	6:19	5:03	4:13	3:36	3:10	2:49
	ft/min	420	530	640	740	850	950

Timing is not authorized for defining the MAPt.