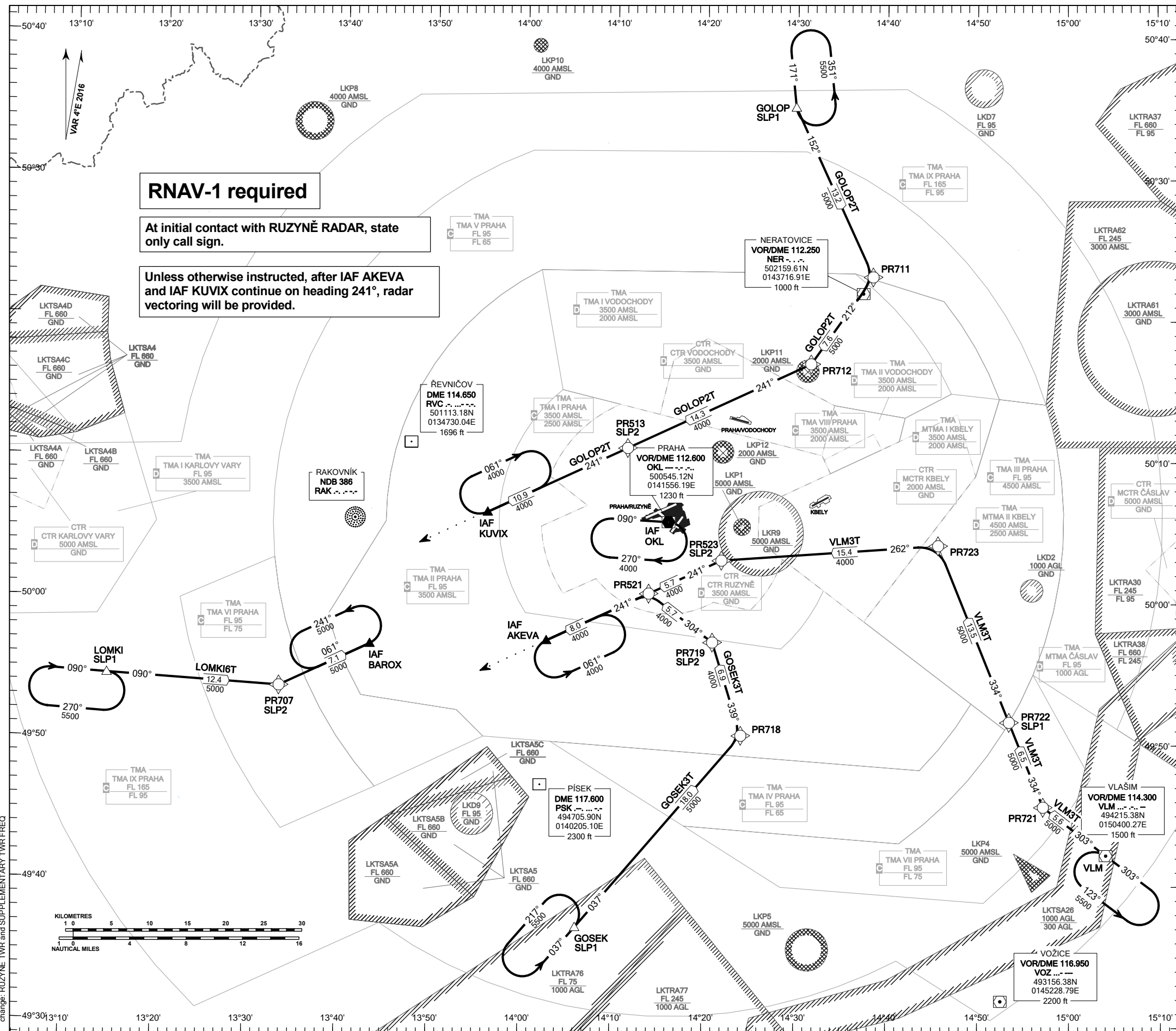


**RNAV STANDARD ARRIVAL CHART - INSTRUMENT  
(STAR) - ICAO**

**PRAHA/RUZYŇĚ  
RNAV STAR RWY 06**

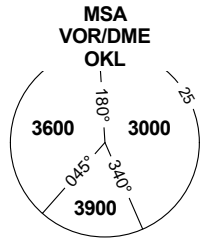


**RNAV-1 required**

At initial contact with RUZYŇĚ RADAR, state only call sign.

Unless otherwise instructed, after IAF AKEVA and IAF KUVIX continue on heading 241°, radar vectoring will be provided.

PRAHA APPROACH / RADAR	120.530
RUZYŇĚ APPROACH / RADAR	127.580
RUZYŇĚ RADAR / INFORMATION	119.010
SUPPLEMENTARY FREQ APP	118.310
RUZYŇĚ DELIVERY	136.080
RUZYŇĚ TOWER	120.060
SUPPLEMENTARY FREQ TWR	134.560
RUZYŇĚ GROUND	118.110
RUZYŇĚ ATIS	121.910
EMERGENCY FREQ	122.160
	121.500



TRANSITION ALTITUDE  
5000

SPEED LIMITING POINT	
SLP1	MAX IAS 250 KT
SLP2	MAX IAS 220 KT

see AIP AD 2-LKPR-30, 2.22.4.2.1.

BEARINGS, TRACKS AND RADIALS ARE MAGNETIC  
ALTITUDES AND ELEVATIONS ARE IN FEET  
DISTANCES ARE IN NM