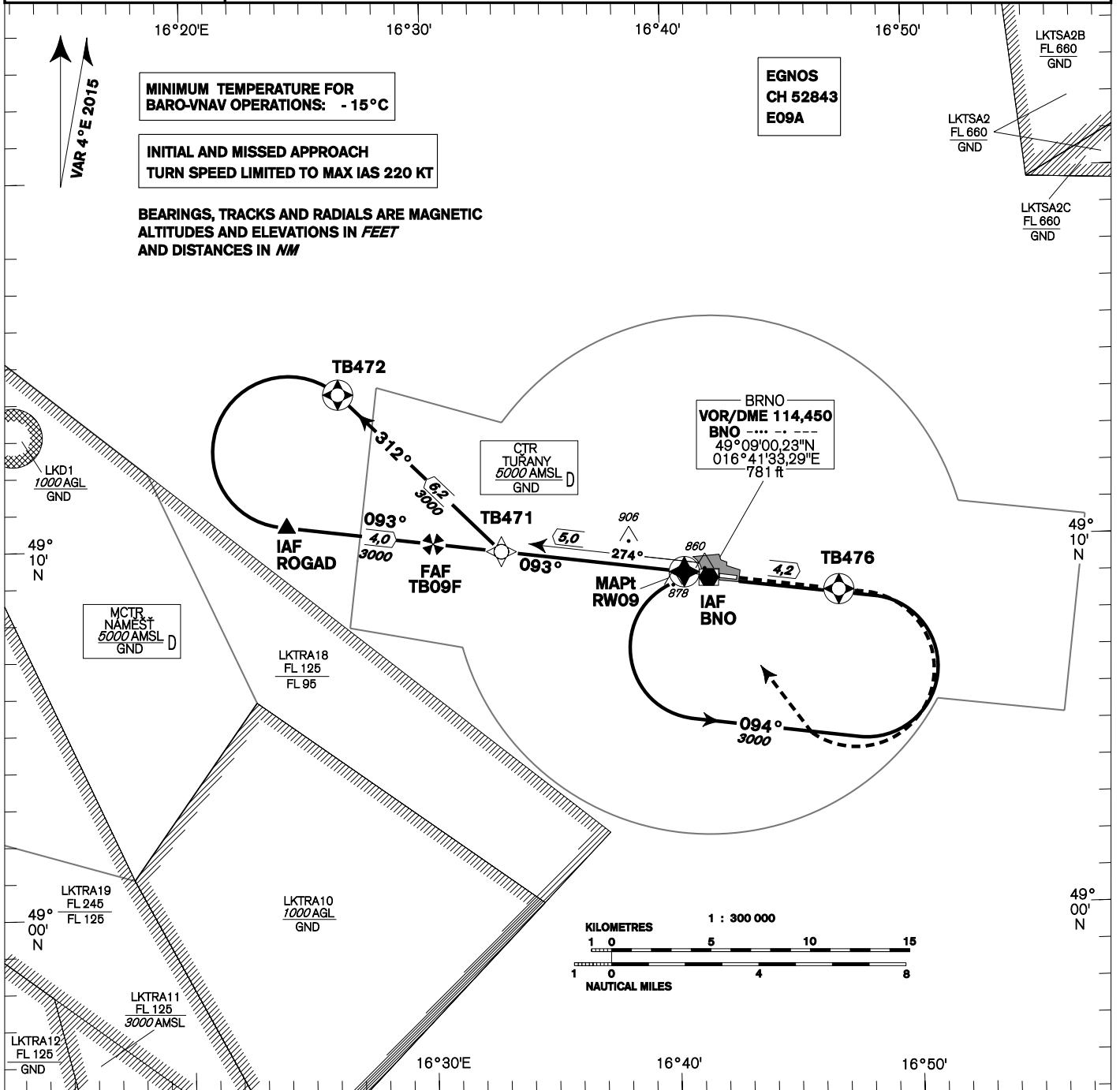


INSTRUMENT APPROACH CHART - ICAO	AERODROME ELEV 778 THR RWY 09 ELEV 764 OCH RELATED TO THR RWY 09	TUŘANY/TOWER 119,605 125,430 121,500 BRNO APPROACH/RADAR 127,350 120,555 121,500	MSA VOR/DME BNO 	BRNO/Tuřany RNAV (GNSS) RWY 09
---	--	--	------------------------	---



FAF TB09F
6,9 NM to RW09
3000

V.P.A. 3,0°

2,4 to RW09
SDF

1580

MAPt
RW09

TB476

MISSED APPROACH:
Climb to TB476,
turn right to VOR/DME BNO
in climbing to 3000ft.

TRANSITION ALTITUDE
5000ft

RDH 49,2

THR 490910.34N 0164033.13E
ELEV 764
NM FM THRO9

OCA/OCH		A	B	C	D
LNAV	ft		1130/360		
LNAV/VNAV	ft		1120/350		
LPV	ft		1060/300		
Circling	ft	1210 R/-	1440 R/-	1560 R/-	1740 R/-

DIST THR NM	6	5	4	3	2	1
ALTITUDES ft	2720	2410	2090	1770	1450	1130

	kt	80	100	120	140	160	180
FAF - MAPt 6,9 NM	min:sec	5:09	4:07	3:26	2:57	2:35	2:17
Rate of descent	ft/min	420	530	640	740	850	960

Timing is not authorized for defining the MAPt.

change vertical limits of LKTS2A, B, C

Posloupnost traťových bodů / Waypoint sequence

Od / From IAF ROGAD		
ROGAD	IAF	fly-by
TB09F	FAF	fly-by
RW09	MAPt	fly-over
TB476		fly-over
VOR/DME BNO		

Od / From IAF VOR/DME BNO		
VOR/DME BNO	IAF	fly-by
TB471		fly-by
TB472		fly-over
ROGAD	IF	fly-by
TB09F	FAF	fly-by
RW09	MAPt	fly-over
TB476		fly-over
VOR/DME BNO		

Seznam traťových bodů / Way point list		
ROGAD	49 10 34,18 N	016 24 08,14 E
VOR/DME BNO	49 09 00,23 N	016 41 33,29 E
TB471	49 09 49,20 N	016 33 00,04 E
TB472	49 14 09,35 N	016 26 20,84 E
TB09F	49 10 03,58 N	016 30 10,89 E
RW09	49 09 10,34 N	016 40 33,13 E
TB476	49 08 37,07 N	016 46 55,67 E

SBAS FAS Data Block

Vstupní data / Input Data

Parametry / Parameters	Hodnoty / Values
Operation Type	0
SBAS Provider	1
Airport Identifier	LKTB
Runway	09
Runway Direction	0
Approach Performance Designator	0
Route Indicator	
Reference Path Data Selector	0
Reference Path Identifier	E09A
LTP/FTP Latitude	490910.3400N
LTP/FTP Longitude	0164033.1300E
LTP/FTP Ellipsoidal Height (metres)	278.0
FPAP Latitude	490859.1200N
Delta FPAP Latitude (seconds)	-11.2200
FPAP Longitude	0164242.8300E
Delta FPAP Longitude (seconds)	129.7000
Threshold Crossing Height	49.2
TCH Units Selector	0
Glidepath Angle (degrees)	3.00
Course Width (metres)	105.00
Length Offset (metres)	0
HAL (metres)	40.0
VAL (metres)	50.0

Výstupní data / Output Data

Parametry / Parameters	Hodnoty / Values
Data Block	10 02 14 0B 0C 09 00 00 01 39 30 05 88 18 18 15 D4 10 28 07 DC 1E 58 A8 FF 48 F5 03 EC 01 2C 01 64 00 C8 FA 93 F2 DA 53
Calculated CRC Value	93F2DA53

Required Additional Data (not CRC wrapped)

These additional data are not required for CRC calculation, but they need to be provided to datahouses for procedure coding in ARINC 424 records.

Parametry / Parameters	Hodnoty / Values
ICAO Code	LK
LTP/FTP Orthometric Height (metres)	233.0
FPAP Orthometric Height (metres)	234.9