

LKCT Chotěboř

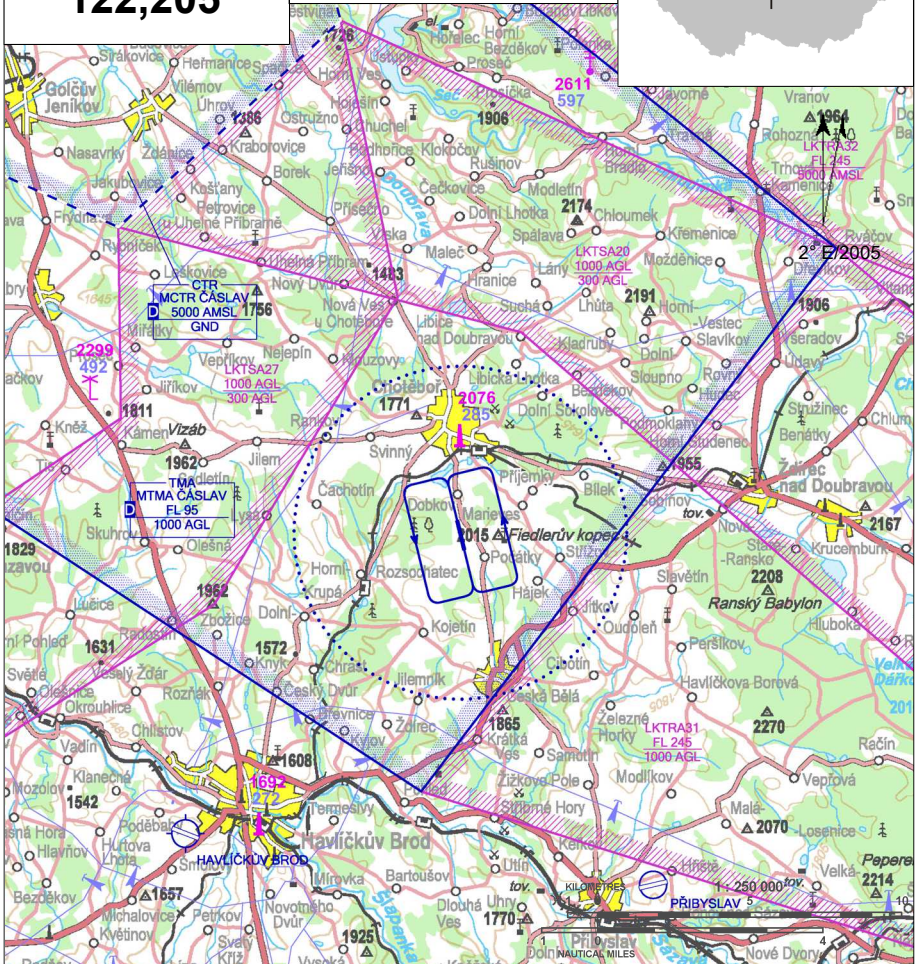
§ Public domestic aerodrome

✈ VFR day



Chotěboř RADIO
122,205

ARP: 49° 41' 09" N, 15° 40' 34" E
4 km S Chotěboř
ELEV: 1946 ft / 593 m
Circuit: 2800 ft / 850 m AMSL



The aerodrome is located in MTMA Čáslav, local restriction see LKTRA31, LKTA20 and LKTA27 (see AIP CR ENR 5.2).

Noise abatement procedures

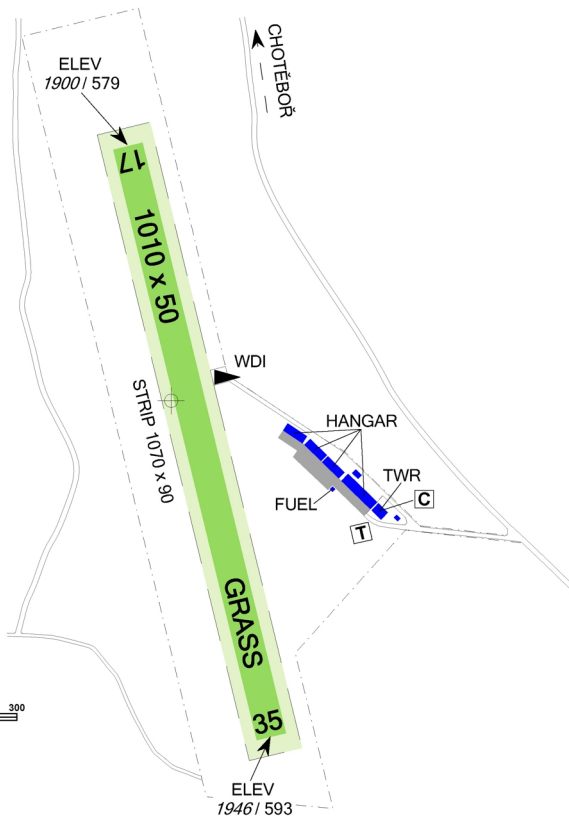
- After take-off from RWY 35 turn left to avoid village Dobkov and cottages near a dam.
- During flight in traffic circuit do not overfly villages Počátky, Dobkov and cottages near a dam north of the aerodrome.

LKCT Chotěboř



Chotěboř RADIO
122,205

RWY	Magnetic direction	RWY dimensions	Strength	TORA	TODA	ASDA	LDA
35	345°	1010 x 50	5700 kg / 0.7 MPa	1010	1040	1010	1010
17	165°	1010 x 50	5700 kg / 0.7 MPa	1010	1040	1010	1010



Aeroklub Chotěboř z.s.

Chotěboř - Počátky 67, 583 01 Chotěboř,
☎ +420 569 624 347, www.akchotebor.cz,
aeroklub@akchotebor.cz

Providing information to known traffic

☎ +420 776 604 347

Ing. Jiří Malimánek - the head of air traffic

☎ +420 723 053 317, vip@akchotebor.cz

Jan Adamec - deputy head of air traffic

☎ +420 602 737 215, EN

Ing. Jiří Smejkal ☎ +420 775 022 585, EN

Customs and immigration clearance: NIL



15 APR - 15 OCT
SAT, SUN, HOL 0700 - 1400
otherwise O/R 24 HR in advance



AVGAS 100LL, MOGAS 95



Total D100, 120; Total XPD100



O/R after agreement



NIL



Chotěboř, O/R 20 beds at the aerodrome



NIL



NIL

